
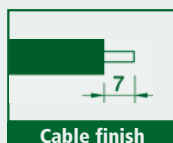


E27 three-piece thermoplastic lampholder and accessories	page 62
E27 one-piece thermoplastic lampholder and accessories	page 65
E27 thermoplastic pull-switch lampholder	page 76
E27 thermoplastic lampholder with toggle switch	page 78
E27 three-piece phenolic thermosetting resin lampholder and accessories	page 80
E27 phenolic thermosetting resin lampholder with toggle switch	page 86
E27 three-piece metal lampholder and accessories	page 88
E27 porcelain lampholder and snap-on domes	page 91
E26 three-piece thermoplastic lampholder and accessories	page 95
E26 one-piece thermoplastic lampholder and accessories	page 97
E26 thermoplastic pull-switch2 lampholder	page 100
E26 thermoplastic lampholder with toggle switch	page 102
E26 three-piece phenolic thermosetting resin lampholder and accessories	page 104
E26 three-piece phenolic thermosetting with toggle switch	page 107
E26 porcelain lampholder and snap-on domes	page 109
E40 porcelain lampholder	page 110



E27 three-piece thermoplastic lampholder and accessories

Rated current: 4A
 Rated voltage: 250V
 Rated temperature: T190-T210
 Overvoltage category: II
 Material: thermoplastic
 Other colours on request
 Approval: 



SERIE A800 TP SERIE A801 TP SERIE A802 TP

Insert for E27 three-piece lampholder with locking device

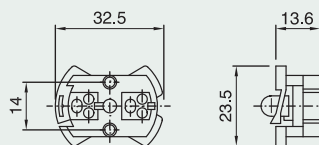
Terminals: spring type for rigid or flexible cables 0.5 ÷ 2.5 mm²

Packaging: 500 pieces

T190 code 018913

T210 code 020225

FRUTTO E27 T210 TPMA



Insert for E27 three-piece lampholder with locking device

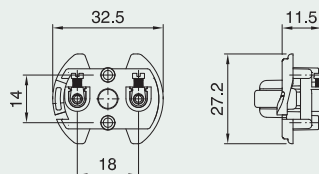
Terminals: screw type for rigid or flexible cables 0.5 ÷ 2.5 mm²

Packaging: 500 pieces

T190 code 029682

T210 code 029683

FRUTTO E27 T210 TPMV



Plain outer shell for E27 three-piece lampholder

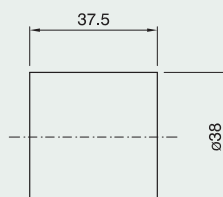
Packaging: 500 pieces

code 019630 black

code 019629 white

code 019631 gold

CAMICIA E27 A800 TP BIANCO



Threaded outer shell for E27 three-piece lampholder

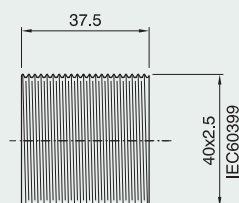
Packaging: 500 pieces

code 019636 black

code 019635 white

code 019637 gold

CAMICIA E27 A801 TP BIANCO



Partly threaded outer shell

for E27 three-piece lampholder

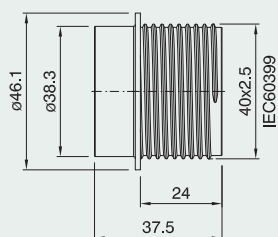
Packaging: 500 pieces

code 034317 black

code 034316 white

code 034318 gold

CAMICIA E27 A802 TP NERO



Dome for E27 three-piece lampholder

Connection: with metal nipple (M10x1)

and stem locking screw

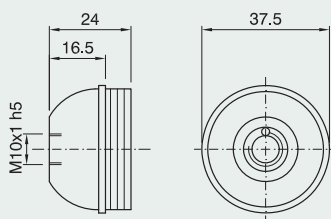
Packaging: 500 pieces

code 028276 black

code 028275 white

code 028277 gold

CAPPELLO E27 NIP TP NERO



Dome for E27 three-piece lampholder

Connection: threaded entry (M10x1) with retainer

Locking device notch: external

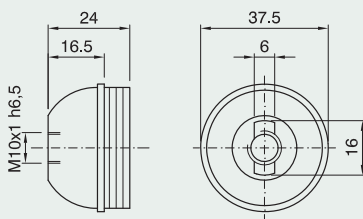
Packaging: 500 pieces

code 028267 black

code 028266 white

code 028268 gold

CAPPELLO E27 ASF TP BIANCO



Dome for E27 three-piece lampholder

with side hole

Connection: threaded entry (M10x1) with retainer

Locking device notch: external

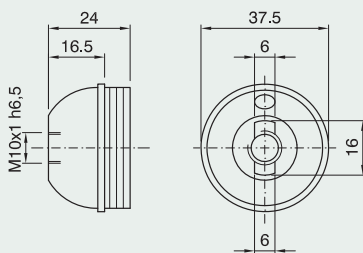
Packaging: 500 pieces

code 026651 black

code 026653 white

code 026652 gold

CAPPELLO E27 ASF FL 2POS TP BI



Dome for E27 three-piece lampholder

Connection: threaded entry (M10x1) with retainer

and stem locking screw

Locking device notch: external

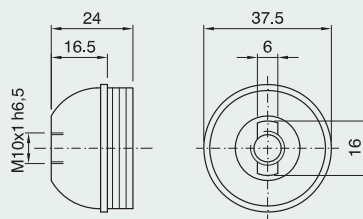
Packaging: 500 pieces

code 028270 black

code 028269 white

code 028271 gold

CAPPELLO E27 ASFV TP BIANCO



E27 LAMPHOLDERS



Dome for E27 three-piece lampholder

Connection: with metal nipple (M10x1) stem locking screw and earth terminal

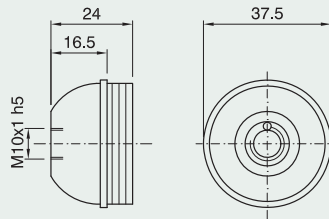
Packaging: 500 pieces

code 028279 black

code 028278 white

code 028280 gold

CAPPELLO E27 T TP NERO



Shade ring for E27 lampholder

Height: 9 mm

Diameter: 47 mm

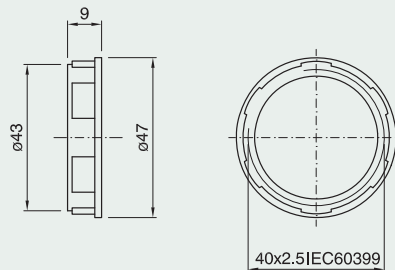
Packaging: 500 pieces

code 011095 black

code 011094 white

code 013234 gold

GHIERA E27 ART. 272 ORO



Shade ring for E27 lampholder

Height: 12 mm

Diameter: 57 mm

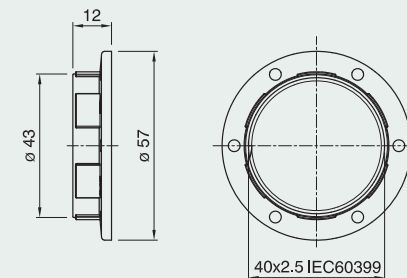
Packaging: 500 pieces

code 011091 black

code 012607 white

code 012608 gold

GHIERA E27 ART. 273 BIANCO



Shade ring for E27 lampholder

Height: 37 mm

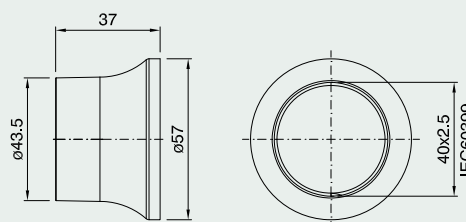
Diameter: 57 mm

Packaging: 250 pieces

code 031822 black

code 031823 white

GHIERA E27 ART. 276 BIANCO



Closed cord grip/insulator for E27 three-piece lampholder*

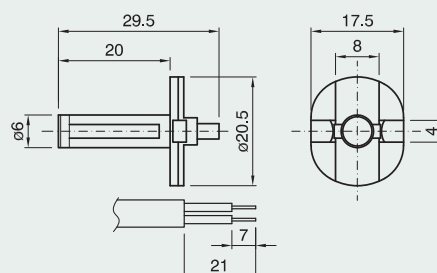
Use: class II applications with flat cables H03VVH2-F 2x0.75 mm² to use with a threaded metal stem (internal diameter: 6.5 ÷ 6.8 mm)

Packaging: 500 pieces

code 024876

SDI PER FRUTTO TP E27

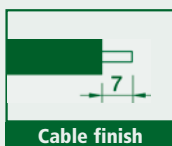
Approval:



* See cord grips applications on page 230

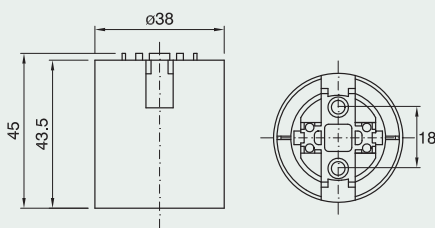
E27 one-piece thermoplastic lampholder and accessories

Rated current: 4A
 Rated voltage: 250V
 Rated temperature: T180 - T210
 Overvoltage category: II
 Material: thermoplastic
 Other colours on request
 Approval:



E27 one-piece lampholder

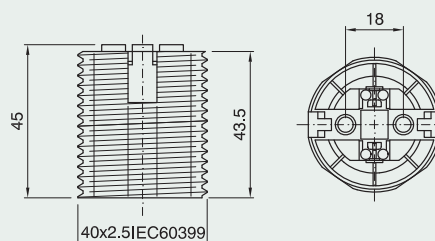
Terminals: spring type for rigid or flexible cables 0.5 ÷ 2.5 mm²
Outer shell: plain
Connection: through holes for M4 screws or with snap-on domes
Packaging: 500 pieces
T180 code 019485 black code 019484 white
T210 code 019489 black code 019487 white code 019490 gold



80S/T180/BI/M/PE/E27

E27 one-piece lampholder

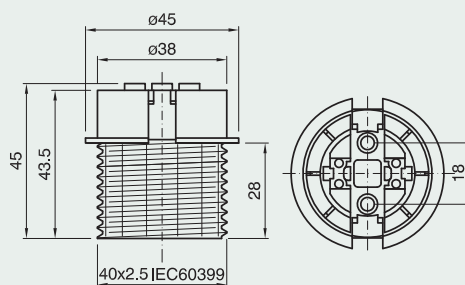
Terminals: spring type for rigid or flexible cables 0.5 ÷ 2.5 mm²
Outer shell: threaded
Connection: through holes for M4 screws or with snap-on domes
Packaging: 500 pieces
T180 code 019492 black code 019491 white
T210 code 019496 black code 019494 white code 019497 gold



81S/T180/BI/M/PE/E27

E27 one-piece lampholder

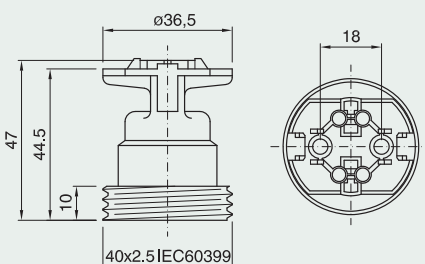
Terminals: spring type for rigid or flexible cables 0.5 ÷ 2.5 mm²
Outer shell: partly threaded
Connection: through holes for M4 screws or with snap-on domes
Packaging: 500 pieces
T180 code 024081 black code 024080 white
T210 code 024084 black code 024083 white code 024085 gold



82S/T180/BI/M/PE/E27

E27 one-piece lampholder

Terminals: spring type for rigid or flexible cables 0.5 ÷ 2.5 mm²
Outer shell: short threaded
Connection: through holes for M4 screws or with snap-on domes
Packaging: 500 pieces
T210 code 025240 black code 025246 natural



83F/T210/BI/M/PE/E27

E27 LAMPHOLDERS



E27 one-piece lampholder

Terminals: spring type for rigid or flexible cables $0.5 \div 2.5 \text{ mm}^2$

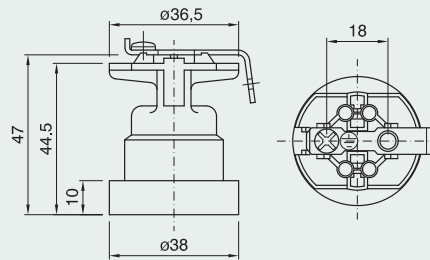
Outer shell: plain

Connection: metal bracket with M4 threaded hole with earth screw

Packaging: 500 pieces

T210 code 025026 natural

83L/SQ16F/VT/T210/NA/MIPDE/E27



E27 one-piece lampholder with spring bracket

Terminals: spring type for rigid or flexible cables $0.5 \div 2.5 \text{ mm}^2$

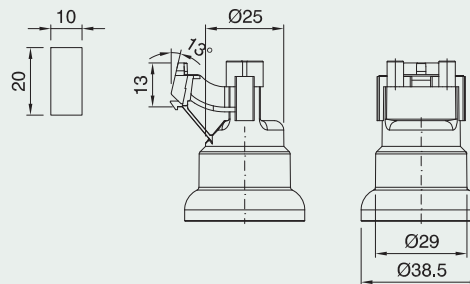
Connection: snap-on type (see drawing for slot pattern)

Lamp base thickness: $0.5 \div 1.0 \text{ mm}$

Packaging: 500 pieces

T210 code 029826 natural

84/T210/NA/MIPDE/E27



E27 one-piece lampholder with spring bracket

Terminals: spring type for rigid or flexible cables $0.5 \div 2.5 \text{ mm}^2$

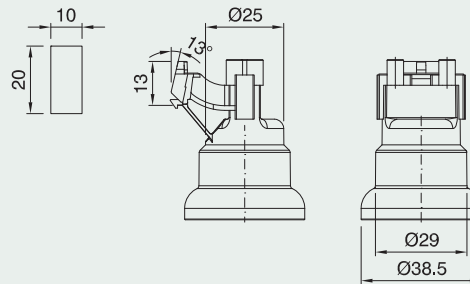
Connection: snap-on type (see drawing for slot pattern)

Lamp base thickness: $0.8 \div 1.4 \text{ mm}$

Packaging: 500 pieces

T210 code 029828 natural

84SP/T210/NA/MIPDE/E27



E27 one-piece lampholder with spring bracket

Terminals: screw type for rigid or flexible cables $0.5 \div 2.5 \text{ mm}^2$

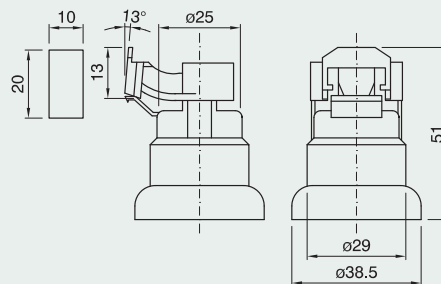
Connection: snap-on type (see drawing for slot pattern)

Lamp base thickness: $0.5 \div 1.0 \text{ mm}$

Packaging: 500 pieces

T210 code 019169 natural

84M/T210/NA/MIPDE/E27



E27 one-piece lampholder

Terminals: spring type for rigid or flexible cables $0.5 \div 2.5 \text{ mm}^2$

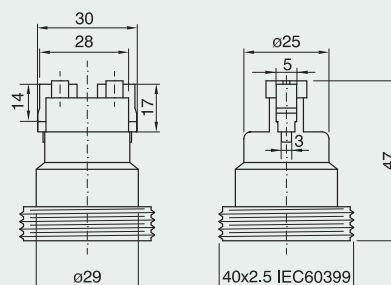
Outer shell: short threaded

Connection: for specific uses

Packaging: 500 pieces

T210 code 018921 natural

85/T210/NA/MIPDE/E27



E27 one-piece lampholder with bracket

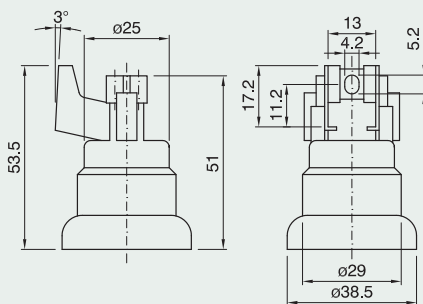
Terminals: spring type for rigid or flexible cables 0.5 ÷ 2.5 mm²

Connection: M4 screws

Packaging: 500 pieces

T210 code 018946 natural

86/T210/NA/MIPDE/E27



E27 one-piece lampholder with bracket

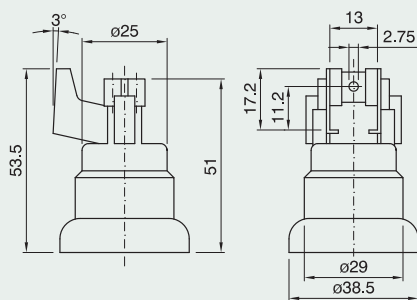
Terminals: spring type for rigid or flexible cables 0.5 ÷ 2.5 mm²

Connection: self-threading screws

Packaging: 500 pieces

T210 code 018947 natural

86A/T210/NA/MIPDE/E27



E27 one-piece lampholder with bracket

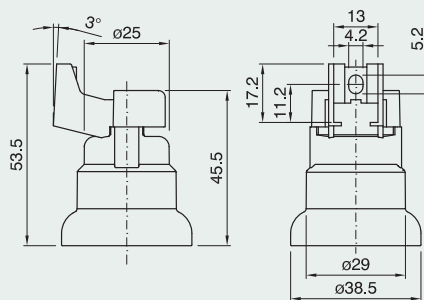
Terminals: screw type for rigid or flexible cables 0.5 ÷ 2.5 mm²

Connection: M4 screws

Packaging: 500 pieces

T210 code 019170 natural

86M/T210/NA/MIPDE/E27



E27 one-piece lampholder with bracket

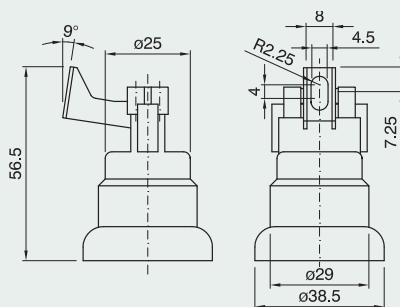
Terminals: spring type for rigid or flexible cables 0.5 ÷ 2.5 mm²

Connection: M4 screws

Packaging: 500 pieces

T210 code 018945 natural

87/T210/NA/MIPDE/E27



E27 one-piece lampholder with bracket

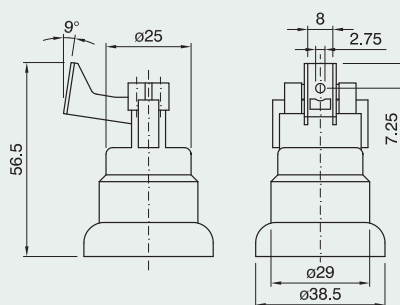
Terminals: spring type for rigid or flexible cables 0.5 ÷ 2.5 mm²

Connection: self-threading screws

Packaging: 500 pieces

T210 code 018948 natural

87A/T210/NA/MIPDE/E27



E27 LAMPHOLDERS



E27 one-piece lampholder with bracket

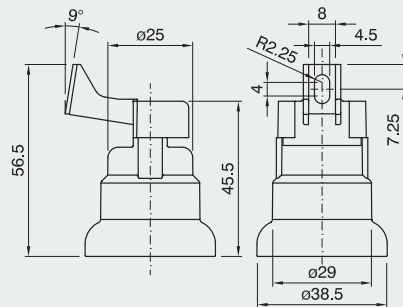
Terminals: screw type for rigid or flexible cables 0.5 ÷ 2.5 mm²

Connection: M4 screws

Packaging: 500 pieces

T210 code 019172 natural

87M/T210/NA/M/PDE/E27



E27 one-piece lampholder

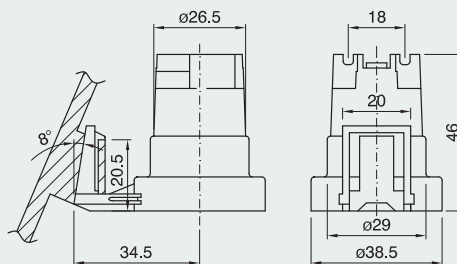
Terminals: screw type for rigid or flexible cables 0.5 ÷ 2.5 mm²

Connection: slide-on for a specially shaped

Packaging: 500 pieces

T210 code 018907 natural

911/T210/NA/M/PDE/E27



E27 one-piece lampholder

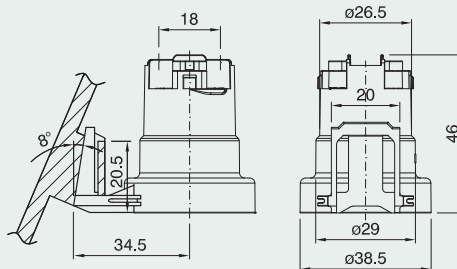
Terminals: spring type for rigid or flexible cables 0.5 ÷ 2.5 mm²

Connection: slide-on for a specially shaped

Packaging: 500 pieces

T210 code 027116 natural

911A/T210/NA/M/PDE/E27



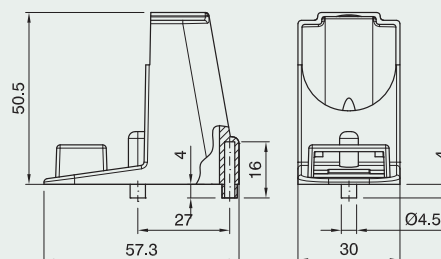
Support dome E27 for one-piece lampholder Item 911

Connection: one or two self-threading screws ø 3.5 mm

Packaging: 500 pieces

code 026923 natural

CAPPELLO E27 ART. 104



E27 one-piece lampholder

Terminals: screw type for rigid or flexible cables 0.5 ÷ 2.5 mm²

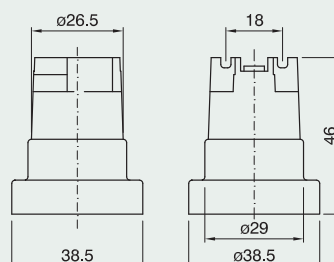
Connection: through holes for M4 screws

Packaging: 500 pieces

T210 code 018906 natural

T210 code 029540 black

912/T210/NA/M/PDE/E27



E27 one-piece lampholder

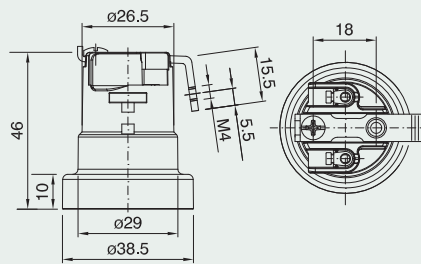
Terminals: screw type for rigid or flexible cables
0.5 ÷ 2.5 mm²

Connection: metal bracket with M4 threaded hole

Packaging: 500 pieces

T210 code 021552 naturals with earth screw

912/ISQ16FV/T/T210/MIPDE/E27



E27 one-piece lampholder

With dome

Terminals: screw type for rigid or flexible cables 0.5 ÷ 2.5 mm²

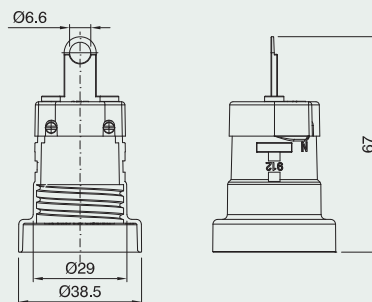
Connection: through dome's hook

Packaging: 250 pieces

T210 Code 029582 black

T210 Code 029957 white

912/CP102/NE/MIT210/PDE/E27



E27 one-piece lampholder

With dome and extension lead

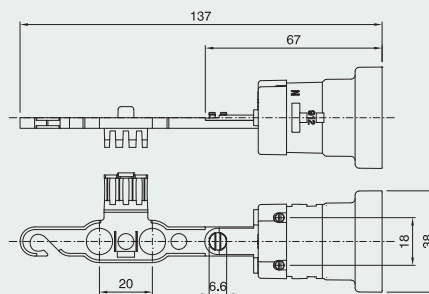
Terminals: screw type for rigid or flexible cables 0.5 ÷ 2.5 mm²

Fissaggio: with extension lead's hook

Packaging: 500 pieces

T210 Code 029583 black

912/CP102/PROLUNGA/NE/MIT210/PDE/E27



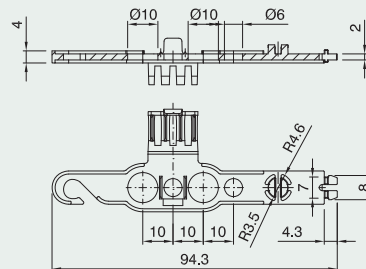
Extension lead for E27 one-piece lampholder

For first installation

Packaging: 500 pieces

Code 029304 black

*PROLUNGA NE X PDE PRIMA
INSTALLAZIONE*



E27 one-piece lampholder

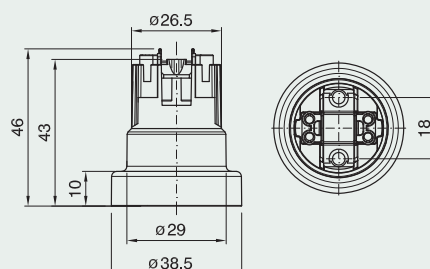
Terminals: spring type for rigid or flexible cables 0.5 ÷ 2.5 mm²

Connection: through holes for M4 screws

Packaging: 500 pieces

code 018905

914/T210/NA/MIPDE/E27



E27 LAMPHOLDERS



E27 one-piece lampholder

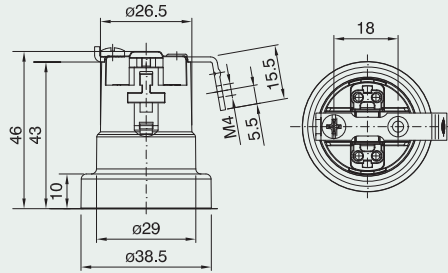
Terminals: spring type for rigid or flexible cables 0.5 ÷ 2.5 mm²

Connection: metal bracket with M4 threaded hole

Packaging: 500 pieces

T210 code 027378 natural with earth screw

914/SQ16FV/T210/MIPDE/E27



E27 one-piece lampholder

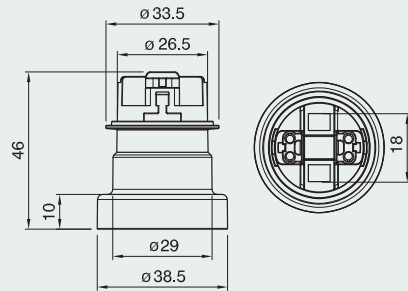
Terminals: spring type for rigid or flexible cables 0.5 ÷ 2.5 mm²

Use: with series 101 snap-on domes (see page 90)

Packaging: 500 pieces

code 027096

914/CP/T210/NA/MIPDE/E27



E27 Spot light with straight base assembled with E27 one-piece lampholder.

Material: thermoplastic

Fixing: by holes ø5.2 mm with wheelbase screw 66mm (see drawing)

Use: with E27 one-piece lampholder article 914 CP (code 027096)

Packaging: 200 pieces

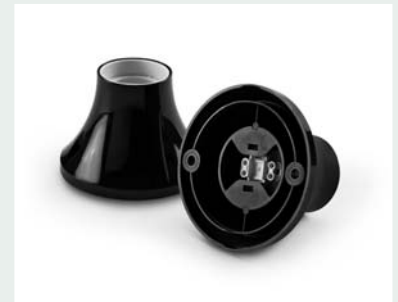
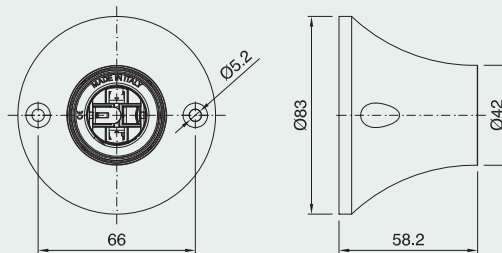
code 033804 white

code 033805 black

PUNTOLUCE E27 ART. PLO

BASE DRITTA NERO

Approval:



E27 Spot light with inclined base Assembled with E27 one-piece lampholder.

Material: thermoplastic

Fixing: by holes ø5.2 mm with wheelbase screw 66mm (see drawing)

Use: with E27 one-piece lampholder article 914 CP (code 027096)

Packaging: 200 pieces

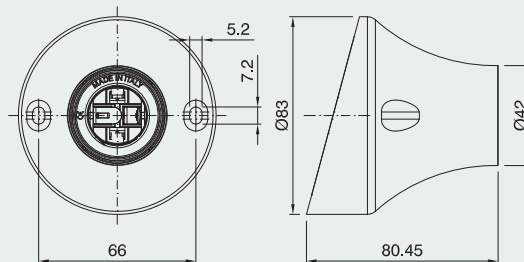
code 033801 white

code 033802 black

PUNTOLUCE E27 ART. PL1 BASE

CURVA BIANCO

Approval:



Dome for E27 one-piece lampholder

Connection: with ø 10.5 mm hole

Locking device notch: internal and external

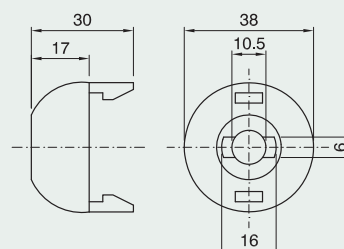
Packaging: 500 pieces

code 014505 black

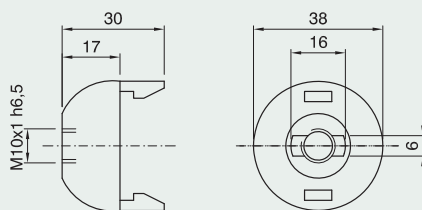
code 012310 white

CAPPELLO E27 ART. 100 AS

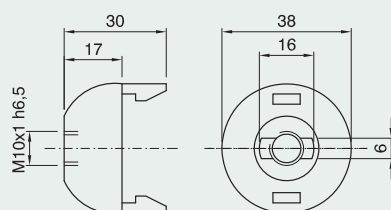
BIANCO



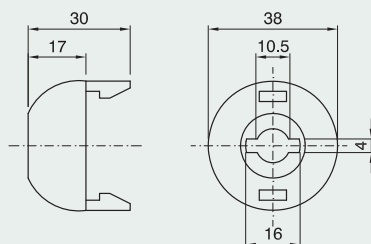
Dome for E27 one-piece lampholder
Connection: threaded entry (M10x1) with retainer
Locking device notch: external
Packaging: 500 pieces
code 029699 black
code 029700 white
code 029698 gold
CAPPELLO E27 ART. 100 ASF
BIANCO



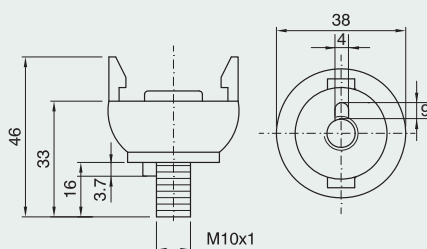
Dome for E27 one-piece lampholder
Connection: threaded entry (M10x1) with retainer and stem locking screw
Locking device notch: external
Packaging: 500 pieces
code 029696 black
code 029697 white
code 029695 gold
CAPPELLO E27 ART. 100 ASFV
BIANCO



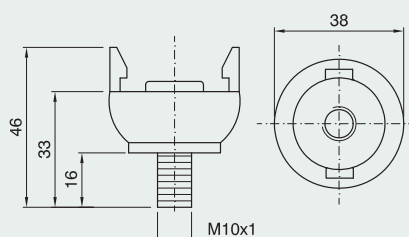
Dome for E27 one-piece lampholder
Connection: with Ø 10.5 mm hole
Locking device notch: pass-through
Packaging: 500 pieces
code 014626 black
code 014625 white
code 014627 gold
CAPPELLO E27 ART. 100 ASS ORO



Dome for E27 one-piece lampholder
Connection: threaded stem (M10x1) and anti-rotating device for porcelain lamp bases
Packaging: 500 pieces
code 015519 black
code 015518 white
code 015520 gold
CAPPELLO E27 ART. 100 BP
BIANCO



Dome for E27 one-piece lampholder
Connection: threaded stem (M10x1) for porcelain lamp bases
Packaging: 500 pieces
code 022822 black
code 018871 white
code 021428 gold
CAPPELLO E27 ART. 100 BPS
BIANCO



E27 LAMPHOLDERS



Extended dome for E27 one-piece lampholder

Connection: threaded stem (M10x1) and anti-rotating device for porcelain lamp bases

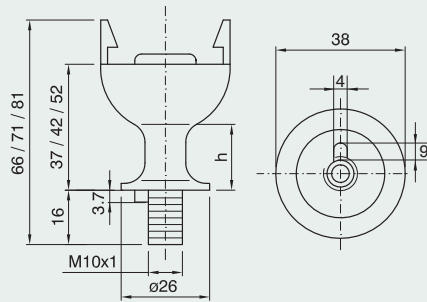
Packaging: 500 pieces

h 20 mm code **018853** black code **018098** white
code **018922** gold

h 25 mm code **018854** black code **018099** white
code **018923** gold

h 35 mm code **018855** black code **018100** white
code **018925** gold

CAPPELLO E27 ART. 100 BP2Q BIANCO



Extended dome for E27 one-piece lampholder

Connection: threaded stem (M10x1) for porcelain lamp bases

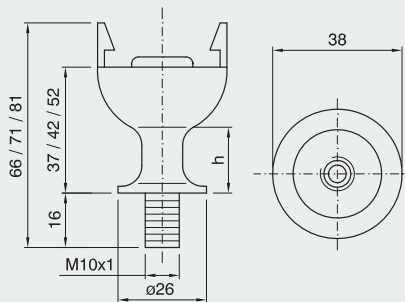
Packaging: 500 pieces

h 20 mm code **019090** black code **018095** white
code **018394** gold

h 25 mm code **018924** black code **018096** white
code **018395** gold

h 35 mm code **019091** black code **018097** white
code **018396** gold

CAPPELLO E27 ART. 100 BP2QS NERO



Dome for E27 one-piece lampholder

Connection: with metal nipple (M10x1) and stem locking screw

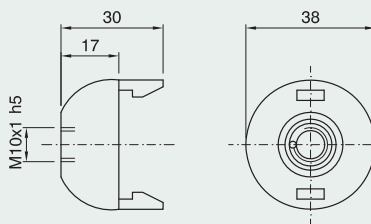
Packaging: 500 pieces

code **028236** black

code **028235** white

code **028237** gold

CAPPELLO E27 ART. 100 NIP BIANCO



Dome for E27 one-piece lampholder

Connection: with metal nipple (M10x1), stem locking screw and earth terminal

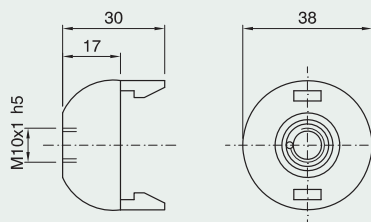
Packaging: 500 pieces

code **011296** black

code **011295** white

code **013028** gold

CAPPELLO E27 ART. 100 T BIANCO



Dome for E27 one-piece lampholder

Use: with hole for cord grips

(code 023964 and code 027103)

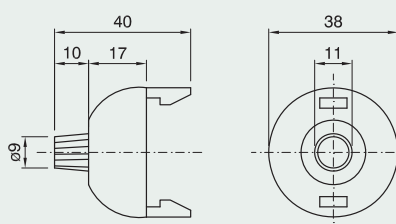
Packaging: 500 pieces

code **015773** black

code **015772** white

code **015774** gold

CAPPELLO E27 ART. 100 SC BIANCO



Dome for E27 one-piece lampholder
Use: on a wood lamp base, for flat cables
 H03VVH2-F

2x0.75 mm² with cod grips (023964)

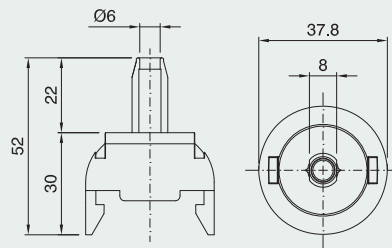
Packaging: 500 pezzi

code 029322 black

code 029321 white

code 029323 gold

CAPPELLO E27 ART.100 BL BIANCO



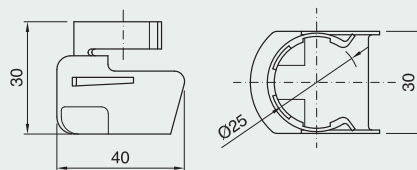
Dome for E27 one-piece lampholder
 (84, 86 and 87 series, 83 with sq16VT, 912, 914)

Connection: snap-on type

Packaging: 500 pieces

cod. 025051

CAPPELLO E27 ART. 103



Dome for E27 one-piece lampholder
 (84, 86 and 87 series, 83 with sq16VT, 912, 914)

Use: with a suitable rubber sleeve
 (supplied separately on demand)

Connection: snap-on type

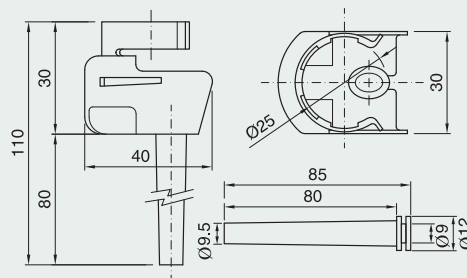
Packaging: 500 pieces

code 025052 dome

CAPPELLO E27 ART. 103F

code 026951 rubber sleeve

TUBO GOMMA TGM85



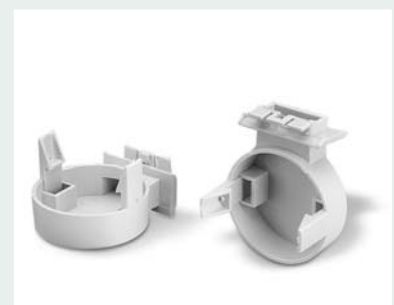
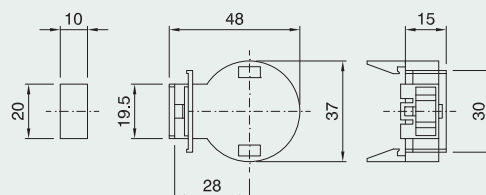
Dome for E27 one-piece lampholder
Connection: snap-on type (see drawing for drilling pattern) on template with thickness 0.5 ÷ 1 mm

Packaging: 500 pieces

code 400070

CAPPELLO E27 ART.102 TSC

BEIGE



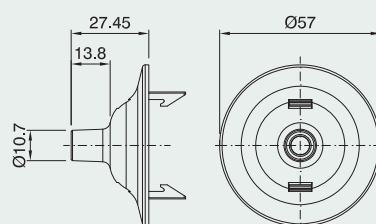
Dome for E27 one-piece lampholder
Use: with SDIR27 cord-grip (code 027103)

Packaging: 500 pieces

code 032077 black

code 032076 white

CAPPELLO E27 ART.100 G BIANCO



E27 LAMPHOLDERS



Shade ring for E27 lampholder

Height: 9 mm

Diameter: 47 mm

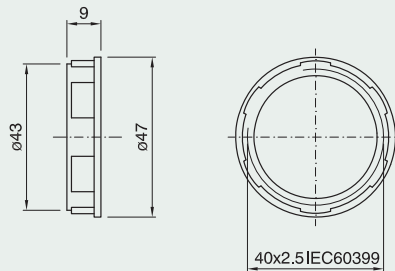
Packaging: 500 pieces

code 011095 black

code 011094 white

code 013234 gold

GHIERA E27 ART. 272 ORO



Shade ring for E27 lampholder

Height: 12 mm

Diameter: 57 mm

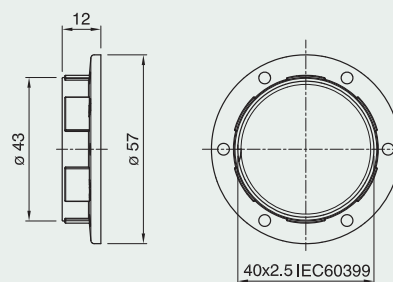
Packaging: 500 pieces

code 011091 black

code 012607 white

code 012608 gold

GHIERA E27 ART. 273 BIANCO



Shade ring for E27 lampholder

Height: 37 mm

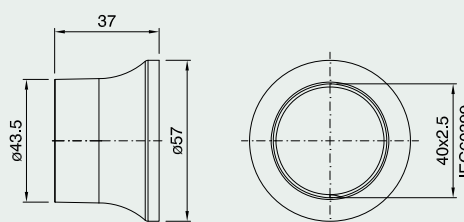
Diameter: 57 mm

Packaging: 250 pieces

code 031822 black

code 031823 white

GHIERA E27 ART. 276 BIANCO



Closed cord grip/insulator for E27 one-piece lampholder*

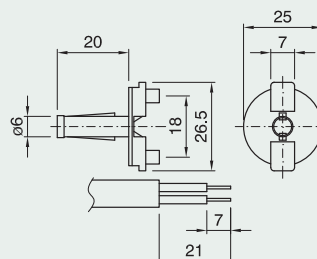
Use: class II applications with flat cables H03VVH2-F 2x0.75 mm² to use with threaded metal stem \varnothing 6.5 ÷ 6.8 mm hole

Packaging: 500 pieces

code 023964

SDI27 SERRACAVO ISOLATORE

Approval:



Closed cord grip/insulator for E27 one-piece lampholder*

Specific for increased tube from \varnothing 6.9 ÷ 7.3 mm

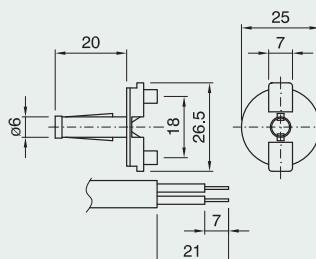
Use: class II applications with flat cables H03VVH2-F 2x0.75 mm²

Packaging: 500 pieces

code 023078

SDI27/1 SERRACAVO ISOLATORE

Approval:



* See cord grips applications on page 230


Closed cord grip/insulator for E27 one-piece lampholder*

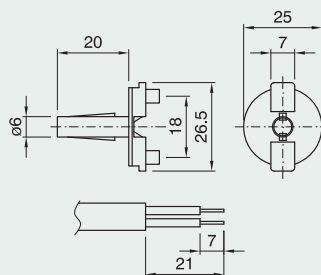
Use: class II applications with round cables H03VV-F 2x0.75 mm² to use with threaded metal stem \varnothing 6.5 ÷ 6.8 mm hole

Packaging: 500 pieces
code 027103

SDIR27 NAT SERRAC. INTERNO

CAVO TONDO

Approval: 



Locking nut for BP series domes

(see pages 67)

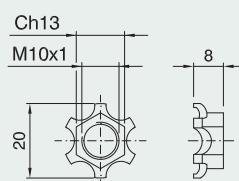
Packaging: 5000 pieces

code 017002 black

code 017194 white

DAF-1 DADO AUTOFRENANTE

BIANCO

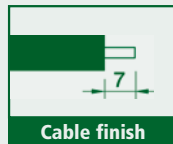


E27 LAMPHOLDERS



E27 thermoplastic pull-switch lampholder

Rated current: 2A
 Rated voltage: 250V
 Overvoltage category: II
 Material: thermoplastic
 For shade rings see on page 64
 Approval:



SERIE A800/IIT1/TP SERIE A801/IIT1/TP SERIE A802/IIT1/TP

Insert for E27 three-piece lampholder, with pull-switch 2 and locking device (conical shaped knob supplied separately on demand)

Terminals: screw type for rigid or flexible cables 0,5 ÷ 2,5 mm²

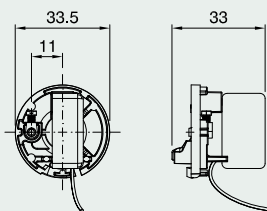
Packaging: 500 pieces

code 033273 insert (without knob)

FRUTTO E27 TIRANTE2 NE SENZA POMOLO

code 024647 conical shaped knob

POMELLO CONICO BIANCO PER TIRANTE



Plain outer shell for E27 three-piece lampholder

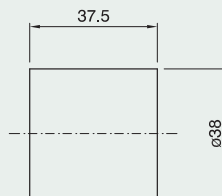
Packaging: 500 pieces

code 019630 black

code 019629 white

code 019631 gold

CAMICIA E27 A800 TP BIANCO



Threaded outer shell for E27 three-piece lampholder

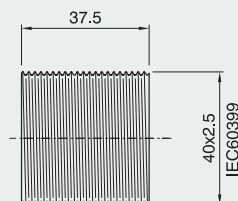
Packaging: 500 pieces

code 019636 black

code 019635 white

code 019637 gold

CAMICIA E27 A801 TP BIANCO



Party threaded outer shell for E27 three-piece lampholder

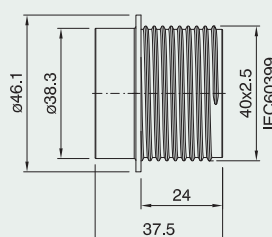
Packaging: 500 pieces

code 034317 black

code 034316 white

code 034318 gold

CAMICIA E27 A802 TP BIANCO



Dome for E27 three-piece lampholder with pull-switch 2

Connection: with metal nipple (M10x1) and stem locking screw

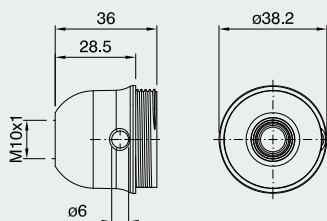
Packaging: 500 pieces

code 033275 black

code 033593 white

CAPPELLO E27 NIP NE PER

TIRANTE 2



Dome for E27 three-piece lampholder with pull-switch 2

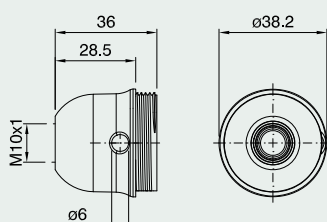
Connection: with metal nipple (M10x1), stem locking screw and earth terminal

Packaging: 500 pieces

code 033276 black

code 033594 white

CAPPELLO E27 T NE PER TIRANTE 2



Dome for E27 three-piece lampholder with pull-switch 2

Connection: with Ø 10.5 mm hole

Locking device notch: pass-through

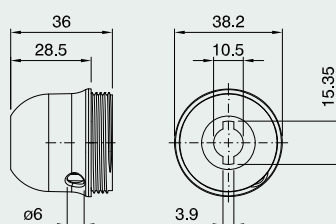
Packaging: 500 pieces

code 033264 black

code 033263 white

CAPPELLO E27 ASS NE PER

TIRANTE 2

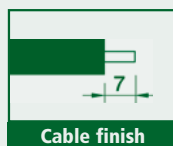


E27 LAMPHOLDERS



E27 thermoplastic lampholder with toggle switch

Rated current: 2A
 Rated voltage: 250V
 Overvoltage category: II
 Material: thermoplastic
 For shade rings see page 64
 Approval:



SERIE A800/IITP A801/IITP A802/IITP

Insert for E27 three-piece lampholder with switch and locking device

Terminals: screw type for rigid or flexible cables 0.5 ÷ 2.5 mm²

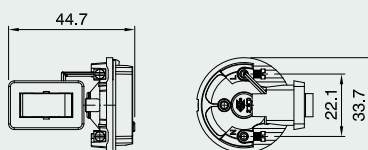
Packaging: 500 pieces

code **031807** black

code **031808** white

FRUTTO E27 MONT. C/B TN I TP

NERO



Plain outer shell for E27 three-piece lampholder

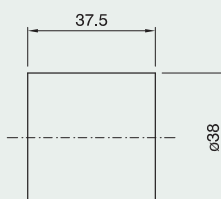
Packaging: 500 pieces

code **019630** black

code **019629** white

code **019631** gold

CAMICIA E27 A800 TP BIANCO



Threaded outer shell for E27 three-piece lampholder

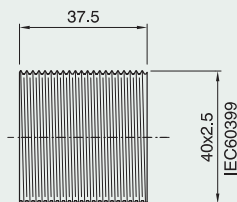
Packaging: 500 pieces

code **019636** black

code **019635** white

code **019637** gold

CAMICIA E27 A801 TP BIANCO



Party threaded outer shell for E27 three-piece lampholder

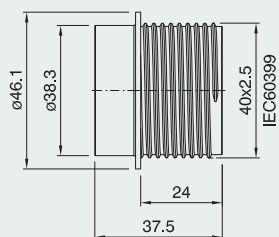
Packaging: 500 pieces

code **034317** black

code **034316** white

code **034318** gold

CAMICIA E27 A802 TP BIANCO

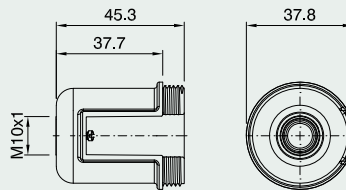


Dome for E27 three-piece lampholder with switch

Connection: with metal nipple (M10x1) and stem locking screw

Packaging: 500 pieces
code **031797 black**
code **031798 white**

CAPPELLO E27 I NIP TP NERO

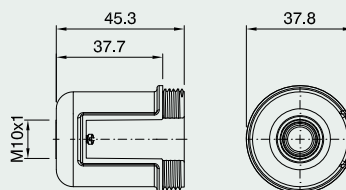


Dome for E27 three-piece lampholder with switch

Connection: with metal nipple (M10x1), stem locking screw and earth terminal

Packaging: 500 pieces
code **032542 black**
code **032541 white**

CAPPELLO E27 I T TP NERO

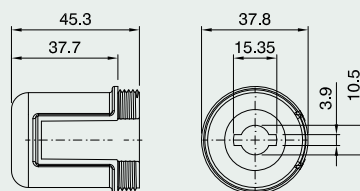


Dome for E27 three-piece lampholder with switch


Connection: with Ø 10.5 mm hole
Locking device notch: pass-through

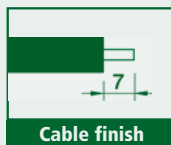
Packaging: 500 pieces
code **031799 black**
code **031800 white**

CAPPELLO E27 I ASS TP NERO



E27 three-piece thermosetting phenolic resin lampholder and accessories

Rated current: 4A
 Rated voltage: 250V
 Rated temperature: T190
 Overvoltage category: II
 Material: phenolic thermosetting resin
 Other colours on request
 Approval: 



SERIE A800

SERIE A801

SERIE A802

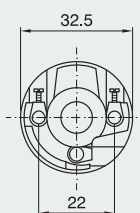
Insert for E27 three-piece lampholder with locking device

Terminals: screw type for rigid or flexible cables $0.5 \div 2.5 \text{ mm}^2$

Packaging: 500 pieces

T190 code 020521

FRUTTO E27 T190 STANDARD



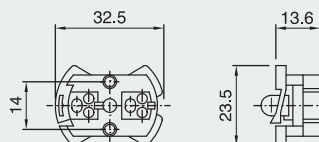
Insert for E27 three-piece lampholder with locking device

Terminals: spring type for rigid or flexible cables $0.5 \div 2.5 \text{ mm}^2$

Packaging: 500 pieces

code 018913

FRUTTO E27 T190 TPMA



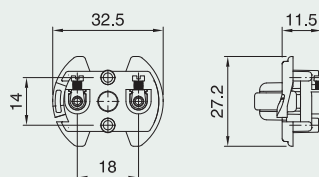
Insert for E27 three-piece lampholder with locking device

Terminals: screw type for rigid or flexible cables $0.5 \div 2.5 \text{ mm}^2$

Packaging: 500 pieces

code 029682

FRUTTO E27 T190 TPMV



Plain outer shell for E27 three-piece lampholder

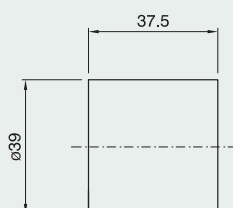
Packaging: 500 pieces

code 007249 black

code 007293 white

code 007286 gold

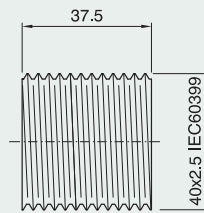
CAMICIA E27 A800 CI ORO



Threaded outer shell for E27 three-piece lampholder

Packaging: 500 pieces
code 007234 black
code 007272 white
code 007250 gold

CAMICIA E27 A801 CI BIANCO

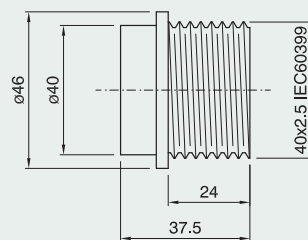


Partly threaded outer shell

for E27 three-piece lampholder

Packaging: 500 pieces
code 007270 black
code 007271 white
code 007292 gold

CAMICIA E27 A802 CI NERO

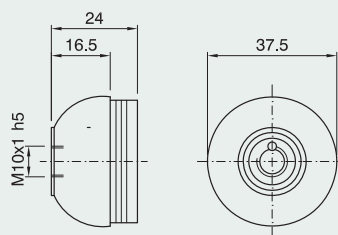


Dome for E27 three-piece lampholder

Connection: with metal nipple (M10x1) and stem locking screw

Packaging: 500 pieces
code 001246 black
code 001247 white
code 001249 gold

CAPPELLO E27 NIP BIANCO

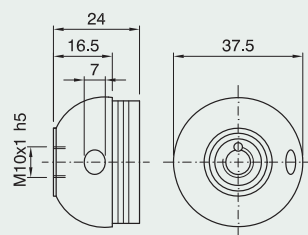


Dome for E27 three-piece lampholder with side hole

Connection: with metal nipple (M10x1) and stem locking screw

Packaging: 500 pieces
code 001294 black
code 001295 white
code 001297 gold

CAPPELLO E27 NIP FL BIANCO

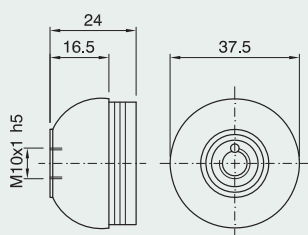


Dome for E27 three-piece lampholder

Connection: with metal nipple (M10x1), stem locking screw and earth terminal

Packaging: 500 pieces
code 026622 black
code 026621 white
code 026623 gold

CAPPELLO E27 T BIANCO



E27 LAMPHOLDERS



Dome for E27 three-piece lampholder

Connection: with \varnothing 10.5 mm hole

Locking device notch: internal and external

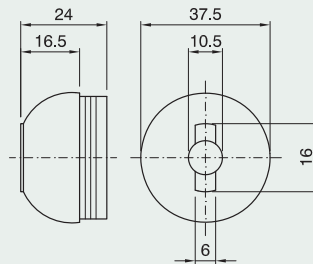
Packaging: 500 pieces

code 001258 black

code 001259 white

code 001261 gold

CAPPELLO E27 AS ORO



Dome for E27 three-piece lampholder

Connection: threaded entry (M10x1) with retainer

Locking device notch: external

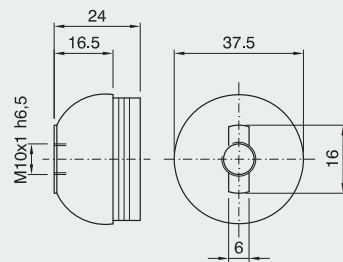
Packaging: 500 pieces

code 001266 black

code 001267 white

code 001269 gold

CAPPELLO E27 ASF BIANCO



Dome for E27 three-piece lampholder

Connection: with \varnothing 10.5 mm hole

Locking device notch: pass-through

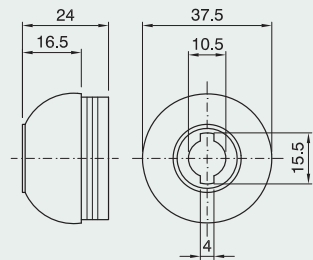
Packaging: 500 pieces

code 007559 black

code 007446 white

code 008053 gold

CAPPELLO E27 ASS ORO



Dome for E27 three-piece lampholder

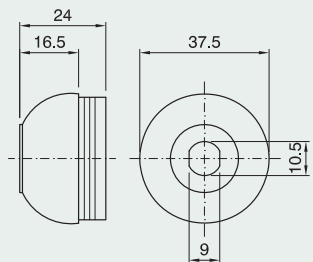
Connection: with oval hole (10.5 x 9 mm)

Packaging: 500 pieces

code 001262 black

code 001263 white

CAPPELLO E27 AR NERO



Dome for E27 three-piece lampholder

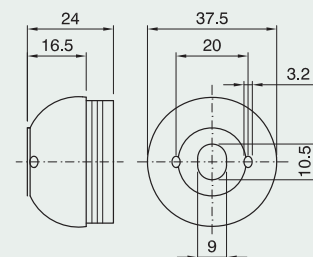
Multiple connection: with oval hole (10.5 x 9 mm) and two through holes for M3 screws

Packaging: 500 pieces

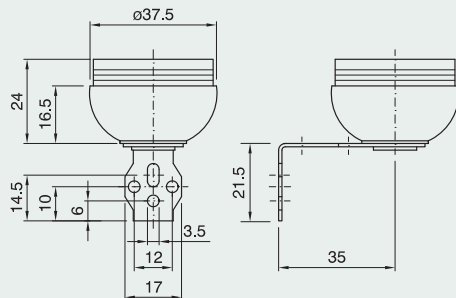
code 013632 black

code 017127 gold

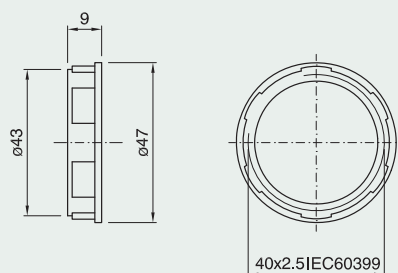
CAPPELLO E27 ARS NERO



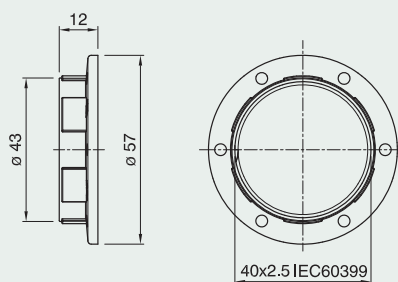
Dome for E27 three-piece lampholder
Connection: metal bracket with holes for M3 screws
Packaging: 500 pieces
code 001278 black
code 001279 white
code 001281 gold
code 001286 black with earth terminal
CAPPELLO E27 SQ4 NERO



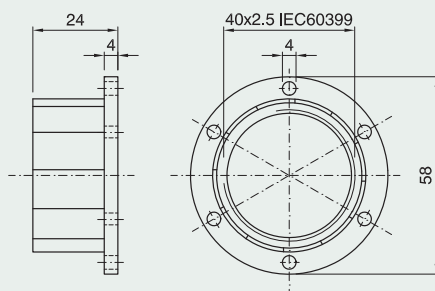
Thermoplastic shade ring for E27 lampholder
Height: 9 mm
Diameter: 47 mm
Packaging: 500 pieces
code 011095 black
code 026476 white painted
code 026477 gold painted
GHIERA E27 ART. 272 NERO



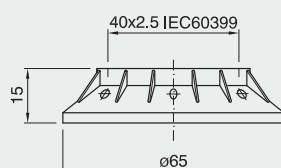
Thermoplastic shade ring for E27 lampholder
Height: 12 mm
Diameter: 57 mm
Packaging: 500 pieces
code 011091 black
code 026478 white painted
code 026479 gold painted
GHIERA E27 ART. 273 NERO



Shade ring for E27 lampholder
Height: 24 mm
Diameter: 58 mm
Packaging: 500 pieces
code 001408 black
code 001409 white
code 001411 gold
GHIERA E27 ART. 2714 BIANCO



Shade ring for E27 lampholder
Height: 15 mm
Diameter: 65 mm
Packaging: 500 pieces
code 001412 black
code 001413 white
code 001415 gold
GHIERA E27 ART. 2715 ORO



E27 LAMPHOLDERS



Shade ring for E27 lampholder

Height: 37 mm

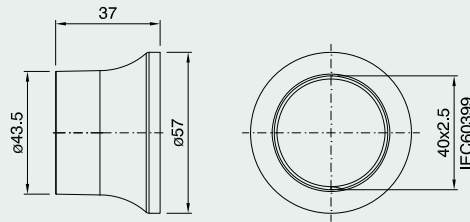
Diameter: 57 mm

Packaging: 250 pieces

code 031822 black

code 031823 white

GHIERA E27 ART. 276 BIANCO



Cord grip for E27 three-piece lampholder

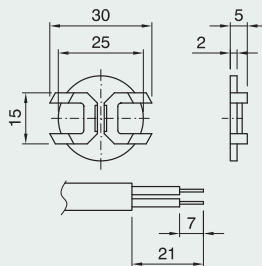
Material: thermoplastic

Use: for flat cables H03VVH2-F 2x0.75 mm²

Packaging: 500 pieces

code 012744

PSSC/IS/27 PINZA SERRACAPO



Cord grip for suspensions (threaded cap is supplied separately on demand)

Material: thermoplastic

Use: for round cables H03VV-F 2x0.75 mm²

Packaging: 500 pieces

Cord grip code 002276

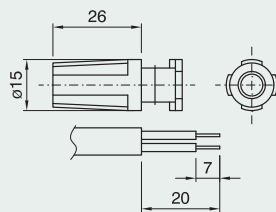
SERRACAPO PER SC

Cap code 002278 black

code 002277 white

code 002285 gold

CAPPUCCIO PER SC30 BIANCO



Cord grip for suspensions (threaded cap is supplied separately on demand)

Material: thermoplastic

Use: for round cables H03VV-F 2x0.75 mm²

Packaging: 500 pieces

Cord grip code 002276

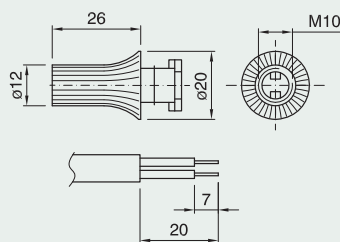
SERRACAPO PER SC

Cap code 024025 black

code 023441 white

code 024026 gold

CAPPUCCIO NE PER SCM



Cover with drops for E27 lampholder with plain outer shell

Material: thermoplastic

Hole: Ø 40 mm

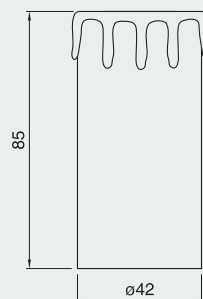
Packaging: 250 pieces

h 85 mm code 016723 ivory

code 016724 old ivory

code 016725 white

BMG 85 F40 BI RIV. P.P.



Cover with antique lacquered drops

for E27 lampholder with plain outer shell

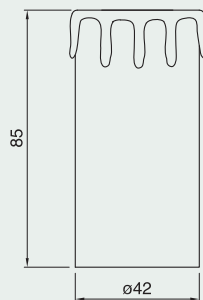
Material: thermoplastic

Hole: Ø 40 mm

Packaging: 250 pieces

h 85 mm code 016767 old ivory


BMGA 85 F40 AV VECCHIO RIV. P.P.

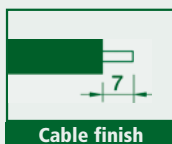


E27 LAMPHOLDERS



E27 phenolic thermosetting resin lampholder with toggle switch

Rated current: 2A
 Rated voltage: 250V
 Overvoltage category: II
 Material: phenolic thermosetting resin
 Other colours on request
 For shade rings see page 83-84
 Approval: 



SERIE A800 I SERIE A801 I SERIE A802 I

Insert for E27 three-piece lampholder with switch and locking device

Terminals: screw type for rigid or flexible cables 0.5 ÷ 2.5 mm²

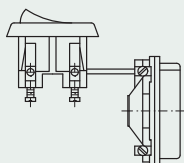
Packaging: 500 pieces

code **011327** black

code **011326** white

code **011517** gold

FRUTTO E27 MONT. C/B TN I NE



Plain outer shell for E27 three-piece lampholder

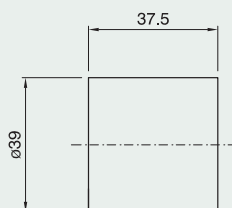
Packaging: 500 pieces

code **007249** black

code **007293** white

code **007286** gold

CAMICIA E27 A800 CI ORO



Threaded outer shell for E27 three-piece lampholder

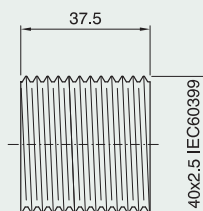
Packaging: 500 pieces

code **007234** black

code **007272** white

code **007250** gold

CAMICIA E27 A801 CI BIANCO



Partly threaded outer shell

for E27 three-piece lampholder

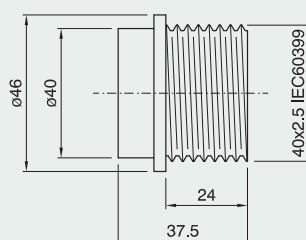
Packaging: 500 pieces

code **007270** black

code **007271** white

code **007292** gold

CAMICIA E27 A802 CI NERO



Dome for E27 three-piece lampholder with switch

Connection: with metal nipple (M10x1) and stem locking screw

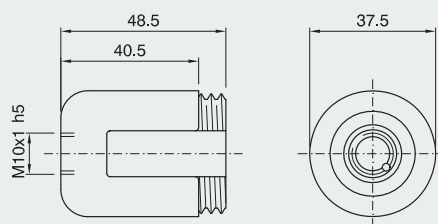
Packaging: 500 pieces

code 011125 black

code 011318 white

code 011516 gold

CAPPELLO E27 I NIP NERO



Dome for E27 three-piece lampholder with switch

Connection: with metal nipple (M10x1), stem locking screw and earth terminal

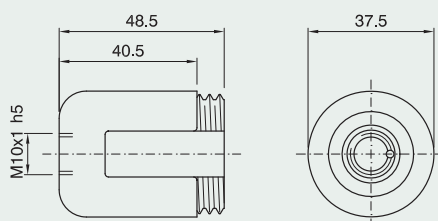
Packaging: 500 pieces

code 013059 black

code 014450 white

code 013399 gold

CAPPELLO E27 I T NERO



Dome for E27 three-piece lampholder with switch

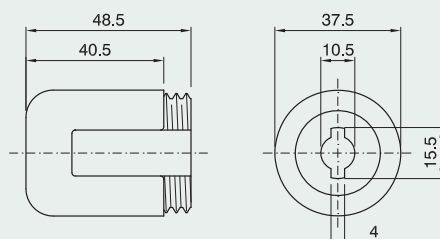
Connection: with Ø 10.5 mm hole

Locking device notch: pass-through

Packaging: 500 pieces

code 012702 black


CAPPELLO E27 I ASS NERO

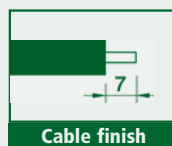


E27 LAMPHOLDERS



E27 three-piece metal lampholder and accessories

Rated current: 4A
Rated voltage: 250V
Overvoltage category: II
Rated temperature: T230
Other treatments
(nickel-plated and chrome plated) on request
Approval: 



SERIE 891 SERIE 890

Insert for E27 three-piece lampholder with locking device

Rated temperature: T230

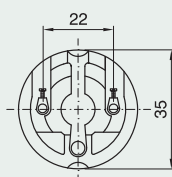
Material: polyester resin

Terminals: screw type for rigid or flexible cables 0.5 ÷ 2.5 mm²

Packaging: 500 pieces

code 028790

FRUTTO E27 T230 M PDE MET



Insert for E27 three-piece lampholder with locking device and earth terminal

Rated temperature: T230

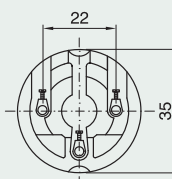
Material: polyester resin

Terminals: screw type for rigid or flexible cables 0.5 ÷ 2.5 mm²

Packaging: 500 pieces

code 028482

FRUTTO E27 FT T230 M PDE MET



Insert for E27 metal lampholder with locking device

Rated temperature: T230

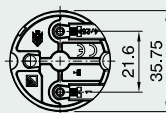
Material: PPS

Terminals: screw type for rigid or flexible cables 0.5 ÷ 2.5 mm²

Packaging: 500 pieces

code 033786

FRUTTO E27 PPS M PDE MET



Insert for E27 metal lampholder with locking device and earth terminal

Rated temperature: T230

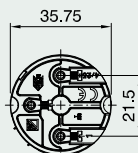
Material: PPS

Terminals: screw type for rigid or flexible cables 0.5 ÷ 2.5 mm²

Packaging: 500 pieces

code 033787

FRUTTO E27 FT PPS M PDE MET



Plain outer shell for E27 metal lampholder

Rated temperature: T230

Insulating ring: polyester resin

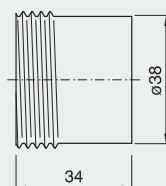
Packaging: 500 pieces

code 011618 brass-plated

code 011648 white zinc-plated

CAMICIA E27 890 LISC. T230

OTTONATO



Threaded outer shell for E27 metal lampholder

Rated temperature: T230

Insulating ring: polyester resin

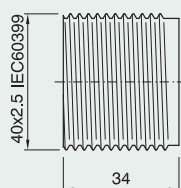
Packaging: 500 pieces

code 011649 brass-plated

code 011650 white zinc-plated

CAMICIA E27 891 FIL. T230

ZINC. BIANCO



Plain outer shell for E27 metal lampholder

Rated temperature: T230

Insulating ring: PPS

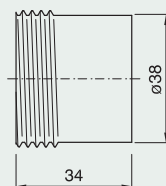
Packaging: 500 pieces

code 033994 brass-plated

code 033995 white zinc-plated

CAMICIA E27 890 PPS LISC. T230

ZINC. BIANCO



Threaded outer shell for E27 metal lampholder

Rated temperature: T230

Insulating ring: PPS

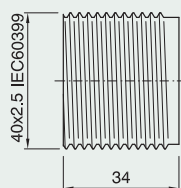
Packaging: 500 pieces

code 033996 brass-plated

code 033997 white zinc-plated

CAMICIA E27 891 PPS FIL. T230

OTTONATO



Round dome for E27 metal lampholder

Connection: with metal nipple (M10x1)

and stem locking screw

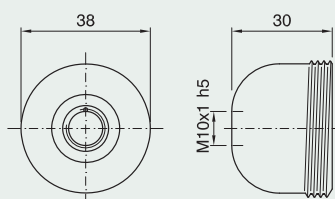
Packaging: 500 pieces

code 027063 brass-plated

code 027064 white zinc-plated

CAPPELLO E27 MET NIP

ZINC. BIANCO



E27 LAMPHOLDERS



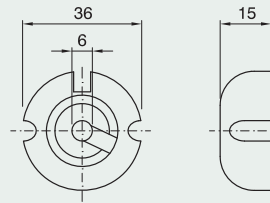
Insulator for round dome

Material: thermoplastic

Packaging: 500 pieces

code 015026

ISM-27 ISOLATORE X CP PDE MET



Conic dome for E27 metal lampholder

Use: with metal nipple (M10x1)

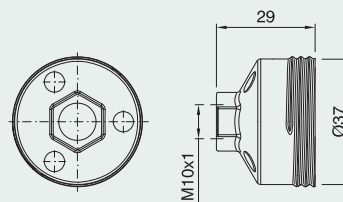
and stem locking screw

Packaging: 500 pieces

code 028177 brass-plated

code 028176 white zinc-plated

CAPPELLO E27 MET ECO NIPIC ZINC. B.



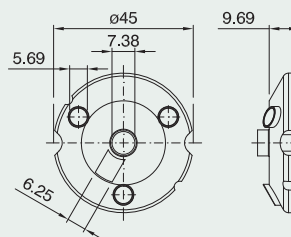
Insulator for conic dome

Material: thermoplastic

Packaging: 500 pieces

code 027967

ISME-27 ISOLATORE X CP PDE MET



Shade ring for E27 metal lampholder

Height: 15.5 mm

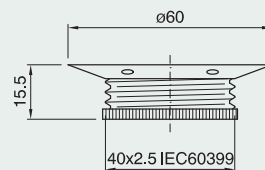
Diameter: 60 mm

Packaging: 500 pieces

code 011489 brass-plated

code 011841 white zinc-plated

GHIERA E27 ART. 2718 MET ZINC. TROPICALIZZATO



Shade ring for E27 metal lampholder

Height: 14.5 mm

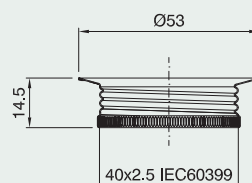
Diameter: 53 mm

Packaging: 500 pezzi


code 019912 brass plated

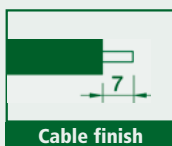
code 019914 white zinc-plated

GHIERA E27 ART.2719 MET ZINC. BIANCO



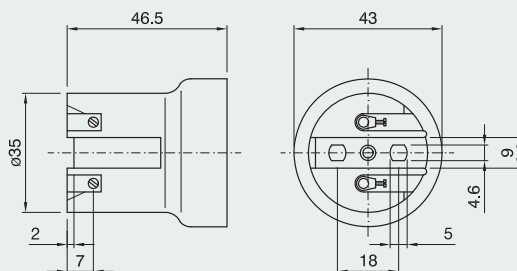
E27 porcelain lampholder and snap-on domes

Rated current: 4A
 Rated voltage: 500 (250V*)
 Rated pulse voltage: 5 KV (2,5 KV*)
 Overvoltage category: III (II*)
 Rated temperature: T270 (T180*)
 Material: porcelain
 Other brackets on request
 Approval: 



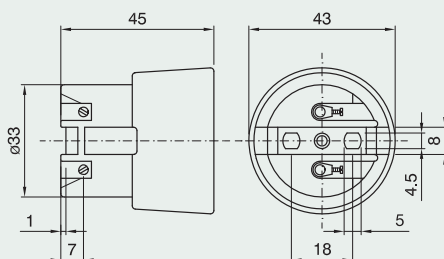
E27 lampholder

Terminals: screw type for rigid or flexible cables 0.5 ÷ 2.5 mm²
Connection: through holes for M4 screws
Screwed shell: zinc-plated steel
Packaging: 200 pieces
code 027189
90/MIPDE/E27



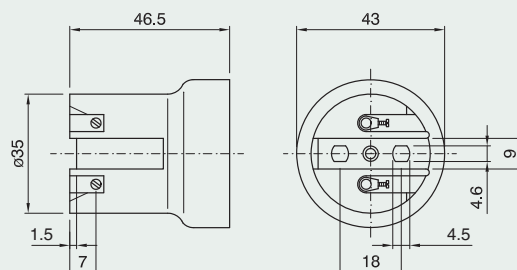
E27 lampholder

Terminals: screw type for rigid or flexible cables 0.5 ÷ 2.5 mm²
Connection: through holes for M4 screws or with snap-on domes
Screwed shell: zinc-plated steel
Packaging: 200 pieces
code 027190
93/MIPDE/E27



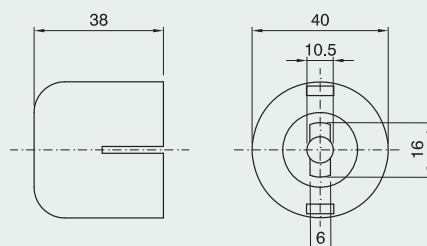
E27 lampholder

Terminals: screw type for rigid or flexible Cables 0.5÷2.5 mm²
Connection: through holes for M4 screw
Screwed shell: zinc-plated steel
Packaging: 200 pieces
code 400111
*4PDE/MI/E27/95**



Dome for porcelain lampholder
 (code 027190)

Material: thermoplastic
Connection: with Ø 10.5 mm hole
Locking device notch: internal and external
Packaging: 500 pieces
code 012862
*CAPPELLO E27 AS BIANCO
 PER PORCELLANA*



E27 LAMPHOLDERS



Dome for porcelain lampholder
(code 027190)

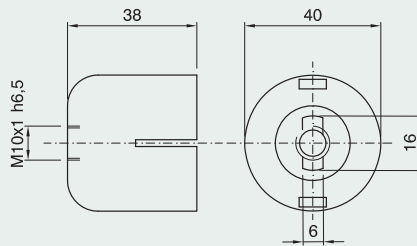
Material: thermoplastic

Connection: threaded entry (M10x1)
with retainer

Locking device notch: external

Packaging: 500 pieces
code 008013

*CAPPELLO E27 ASF BIANCO
PER PORCELLANA*



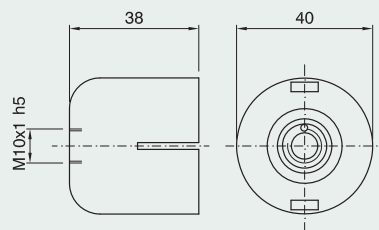
Dome for porcelain lampholder
(code 027190)

Material: thermoplastic

Connection: with metal nipple (M10x1)
and stem locking screw

Packaging: 500 pieces
code 007545

*CAPPELLO E27 NIP BIANCO
PER PORCELLANA*



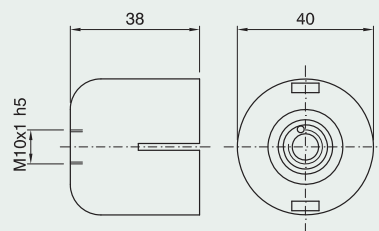
Dome for porcelain lampholder
(code 027190)

Material: thermoplastic

Connection: with metal nipple (M10x1),
stem locking screw and earth terminal

Packaging: 500 pieces
code 007546

*CAPPELLO E27 T BIANCO
PER PORCELLANA*



E27 lampholder

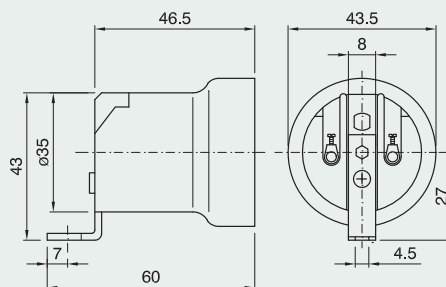
Terminals: screw type for rigid or flexible
cables 0.5 ÷ 2.5 mm²

Connection: metal bracket with Ø 4.5 mm hole

Screwed shell: zinc-plated steel

Packaging: 150 pieces

code 021267 with earth terminal
90/SQ7/T/MIPDE/E27



E27 lampholder

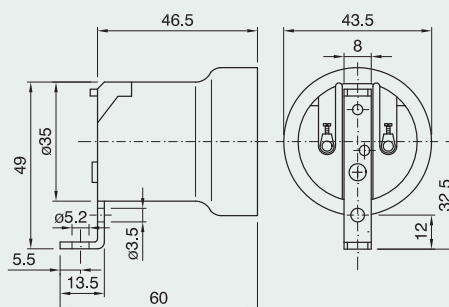
Terminals: screw type for rigid or flexible
cables 0.5 ÷ 2.5 mm²

Connection: metal bracket with Ø 5.2 mm hole

Screwed shell: zinc-plated steel

Packaging: 150 pieces

code 021269 with earth screw
90/SQ11/MIPDE/E27



E27 lampholder

Terminals: screw type for rigid or flexible cables $0.5 \div 2.5 \text{ mm}^2$

Connection: metal bracket with two M3 threaded holes (centre distance 13 mm) and M4 threaded central hole

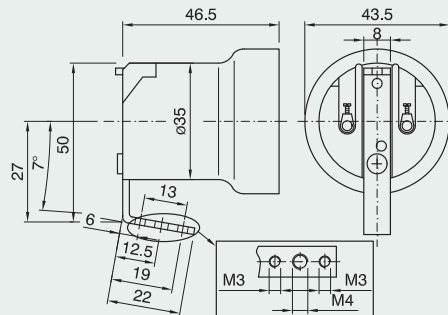
Screwed shell: zinc-plated steel

Packaging: 200 pieces

code 021273

code 021275 with earth screw

90/SQ18/VT/M/PDE/E27



E27 lampholder

Terminals: screw type for rigid or flexible cables $0.5 \div 2.5 \text{ mm}^2$

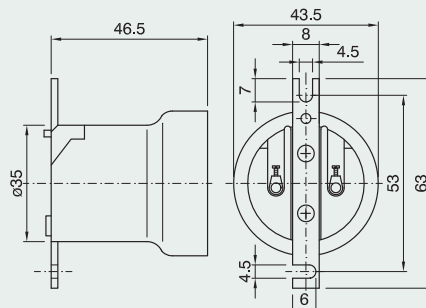
Connection: flat metal bracket with two through holes for M4 screws (centre distance 53 mm)

Screwed shell: zinc-plated steel

Packaging: 200 pieces

code 021276

90/SQ20/M/PDE/E27



E27 lampholder

Terminals: screw type for rigid or flexible cables $0.5 \div 2.5 \text{ mm}^2$

Connection: metal bracket with threaded metal nipple (M10x1), retainer and stem locking screw

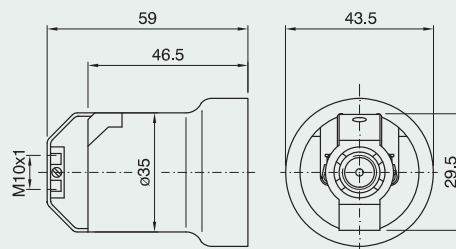
Screwed shell: zinc-plated steel

Packaging: 150 pieces

code 021278

code 021289 with earth terminal

90/SQ21/M/PDE/E27



E27 lampholder

Terminals: screw type for rigid or flexible cables $0.5 \div 2.5 \text{ mm}^2$

Connection: metal bracket with threaded through hole (M10x1)

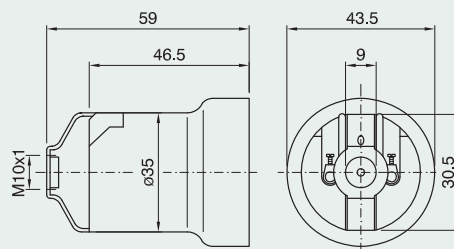
Screwed shell: zinc-plated steel

Packaging: 200 pieces

code 021279

code 021280 with earth terminal

90/SQ22/M/PDE/E27



E27 lampholder

Terminals: screw type for rigid or flexible cables $0.5 \div 2.5 \text{ mm}^2$

Connection: metal spring bracket

Screwed shell: zinc-plated steel

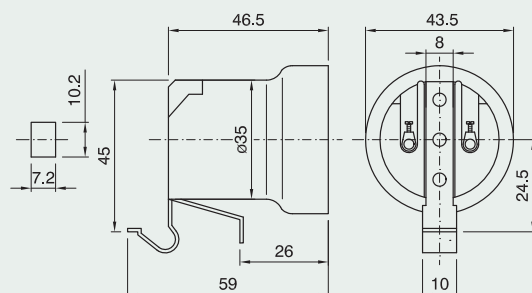
Lamp base thickness: $0.5 \div 2 \text{ mm}$

Packaging: 150 pieces

code 021282

code 021283 with earth terminal

90/SQ24/A-24/B/M/PDE/E27



E27 LAMPHOLDERS



E27 lampholder

Terminals: screw type for rigid or flexible cables $0.5 \div 2.5 \text{ mm}^2$

Connection: metal spring bracket

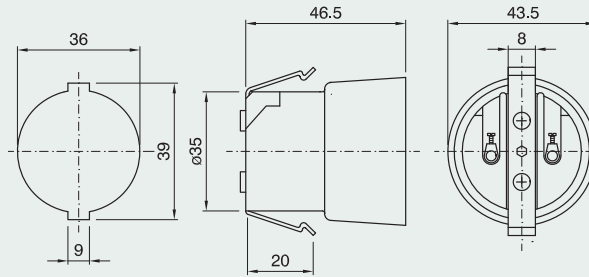
Lamp base thickness: $0.5 \div 2 \text{ mm}$

Screwed shell: zinc-plated steel

Packaging: 200 pieces

code 018657

93/ISQ17/MI/PDE/E27



E27 lampholder

Terminals: screw type for rigid or flexible Cables $0.5 \div 2.5 \text{ mm}^2$

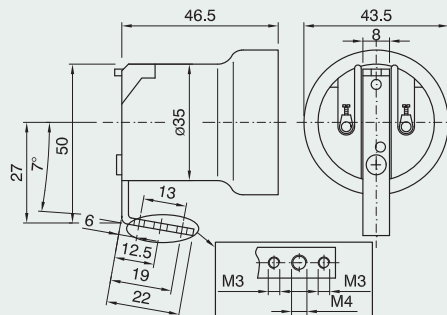
Connection: metal bracket with two M3 threaded holes (centre distance 13 mm) and M4 threaded central hole

Screwed shell: zinc-plated steel

Packaging: 200 pieces

Code 400112

*4PDE/MI/E27/95/ISQE18/VT**



E27 lampholder

Terminals: screw type for rigid or flexible cables $0.5 \div 2.5 \text{ mm}^2$

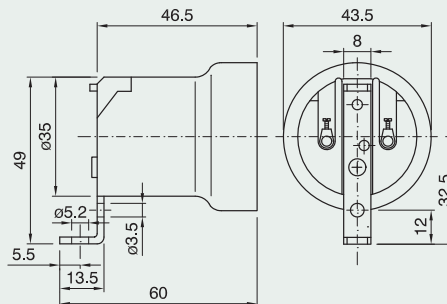
Connection: metal bracket with $\varnothing 5.2 \text{ mm}$ hole

Screwed shell: zinc-plated steel

Packaging: 400 pieces

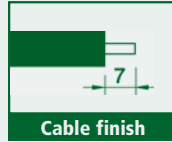
cod. 400069 with earth screw

*4PDE/MI/E27/95/ISQE11/VT**



E26 three-piece thermplastic lampholder and accessories

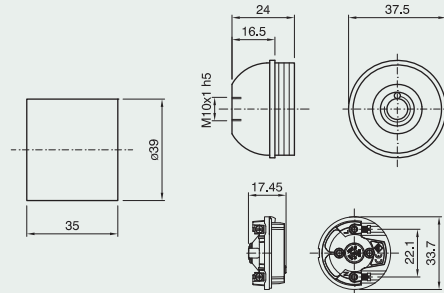
Rated wattage: 660W
 Rated voltage: 250V
 Rated temperature: T150
 Material: thermplastic
 Approval:



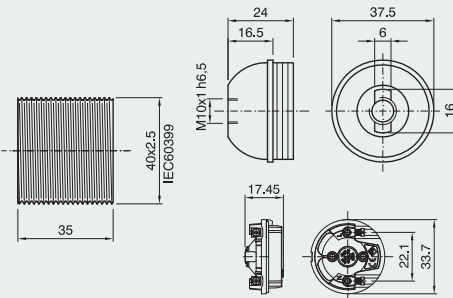
SERIE E26 ART. A800 TP A801 TP A802 TP

Beware: three-piece lampholder approved can't be supplied in their single box, but must be compulsory supplied disassembled into master box that contain:
 250pcs of outer shell, 250pcs of insert and 250pcs of dome.

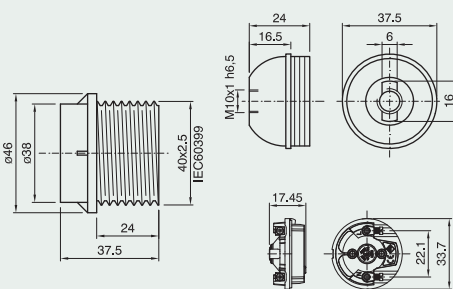
E26 lampholder disassembled into three pieces:
 insert with locking device, plain outer shell
 and dome with metal nipple (M10x1) and stem
 locking screw
cod. 031596 black
A800TP/TP/NIP-TP/INE/SM/S250/PDE/E26



E26 lampholder disassembled into three pieces:
 insert with locking device, threaded outer shell
 and dome threaded entry (M10x1) with retainer
 and stem locking screw
cod. 033603 white
A801TP/TP/ASFV-TP/BI/SM/S250/PDE/E26



E26 lampholder disassembled into three pieces:
 insert with locking device, partly threaded outer
 shell and dome with Ø 10.5 mm hole and
 locking device notch pass-through
cod. 034574 black
A802TP/TP/ASS-TP/INE/SM/S250/PDE/E26



E26 LAMPHOLDERS



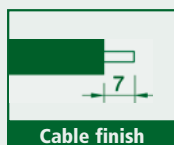
POSSIBLE ASSEMBLY

(Is used the insert FRUTTO E26 TP with screw type for rigid or flexible cables AWG 18)

FRUTTO E26 TP	OUTER SHELL for E26 three-piece thermoplastic lampholder		
	CAMICIA E26 A800 TP	CAMICIA E26 A801 TP	CAMICIA E26 A802 TP
DOME for E26 three-piece thermoplastic lampholder CAPPELLO E26 ASF TP 	✓	✓	✓
CAPPELLO E26 ASFV TP 	✓	✓	✓
CAPPELLO E26 ASS TP 	✓	✓	✓
CAPPELLO E26 NIP TP 	✓	✓	✓
CAPPELLO E26 T TP 	✓	✓	✓
CAPPELLO E26 G TP 	✓	✓	✓

E26 one-piece thermoplastic lampholder and accessories

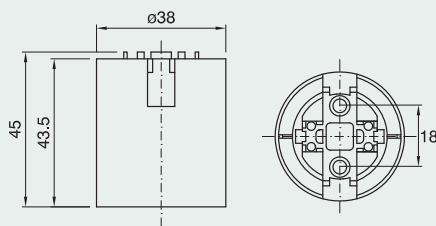
Rated power: 660 W
 Rated voltage: 250V
 Rated temperature: T150
 Material: thermoplastic
 For other domes see pages 70-73
 Approval: c



E26 one-piece lampholder

Terminals: spring type for rigid or flexible cables AWG 18
Outer shell: plain
Connection: through holes for M4 screws or with snap-on domes
Packaging: 500 pieces
code 023999 black
code 023998 white

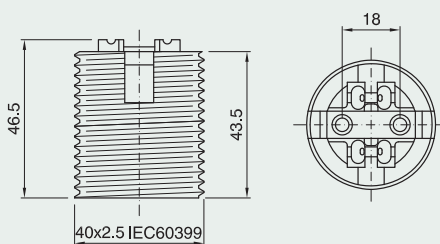
80/BI/M/PE/IE26



E26 one-piece lampholder

Terminals: spring type for rigid or flexible cables AWG 18
Outer shell: threaded
Connection: through holes for M4 screws or with snap-on domes
Packaging: 500 pieces
code 024072 black
code 024071 white

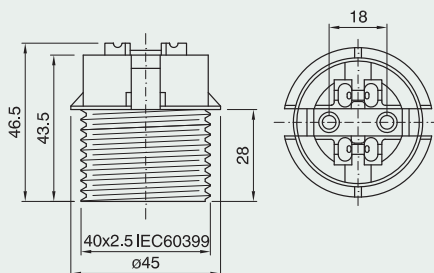
81/BI/M/PE/IE26



E26 one-piece lampholder

Terminals: spring type for rigid or flexible cables AWG 18
Outer shell: partly threaded
Connection: through holes for M4 screws or with snap-on domes
Packaging: 500 pieces
code 024075 black
code 024074 white

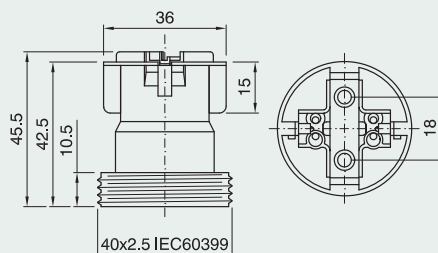
82/NE/M/PE/IE26



E26 one-piece lampholder

Terminals: spring type for rigid or flexible cables AWG 18
Outer shell: short threaded
Connection: through holes for M4 screws or with snap-on domes
Packaging: 500 pieces
code 025297 black
code 025298 natural

83/NA/M/PE/IE26



E26 LAMPHOLDERS



Dome for E27-E26 one-piece lampholders

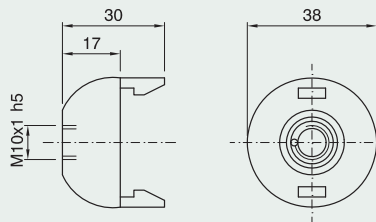
Connection: with metal nipple (M10x1) and stem locking screw

Packaging: 500 pieces

code 028236 black

code 028235 white

CAPPELLO E27 ART. 100 NIP BIANCO



Dome for E27-E26 one-piece lampholders

Connection: with \varnothing 10.5 mm hole

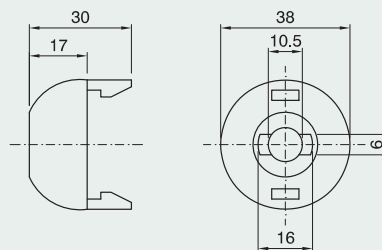
Locking device notch: internal and external

Packaging: 500 pieces

code 014505 black

code 012310 white

CAPPELLO E27 ART. 100 AS BIANCO



Dome for E27-E26 one-piece lampholders

Connection: threaded entry (M10x1) with retainer

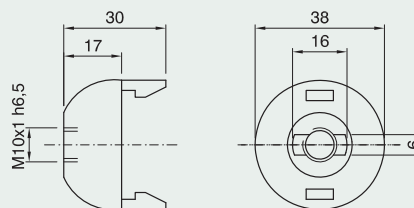
Locking device notch: external

Packaging: 500 pieces

code 029699 black

code 029700 white

CAPPELLO E27 ART. 100 ASF BIANCO



Shade ring for E27-E26 lampholders

Height: 9 mm

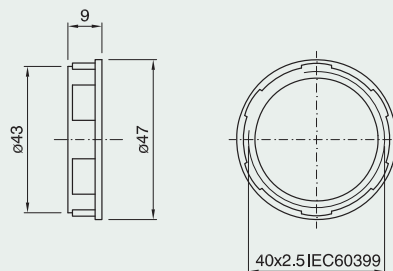
Diameter: 47 mm

Packaging: 500 pieces

code 011095 black

code 011094 white

GHIERA E27 ART. 272 BIANCO



Shade ring for E27-E26 lampholders

Height: 12 mm

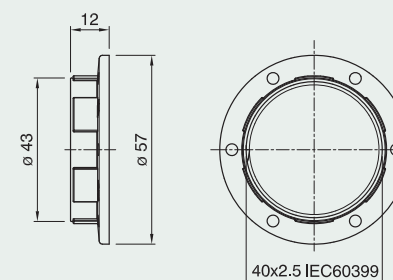
Diameter: 57 mm

Packaging: 500 pieces

code 011091 black

code 012607 white

GHIERA E27 ART. 273 BIANCO



Shade ring for E27 lampholder

Height: 37 mm

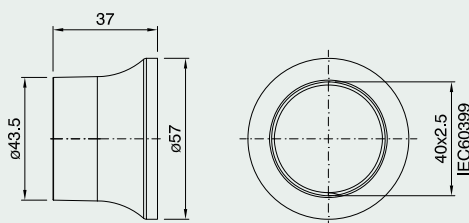
Diameter: 57 mm

Packaging: 250 pieces

code 031822 black

code 031823 white

GHIERA E27 ART. 276 BIANCO



POSSIBLE ASSEMBLY

(Is used the insert FRUTTO E26 TIRANTE 2 with screw type for rigid or flexible cables AWG 18)

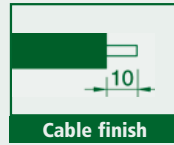
FRUTTO E26 TIRANTE 2		OUTER SHELL for E26 three-piece lampholder with pull-switch 2		
		CAMICIA E26 A800 TP	CAMICIA E26 A801 TP	CAMICIA E26 A802 TP
DOME for E26 three-piece lampholder with pull-switch 2	CAPPELLO E26 NIP X TIRANTE 2 	✓	✓	✓
	CAPPELLO E26 T X TIRANTE 2 	✓	✓	✓
	CAPPELLO E26 ASS X TIRANTE 2 	✓	✓	✓

E26 LAMPHOLDERS



E26 thermoplastic lampholder with toggle switch

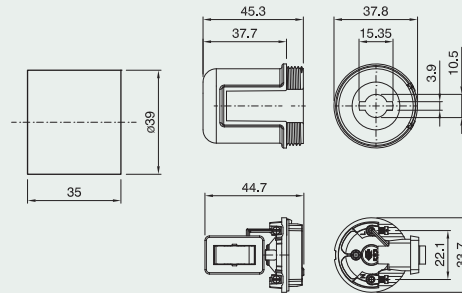
Rated power: 250W
 Rated voltage: 125V
 Rated temperature: T150
 Material: thermoplastic
 Approval: US



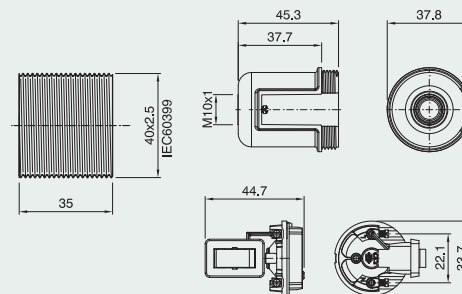
SERIE E26 I TP A800/IITPI/E26 A801/IITPI/E26 A802/IITPI/E26

Beware: the components below are supplied disassembled into master box that contain: 250pcs of outer shell, 250pcs of insert and 250pcs of dome.

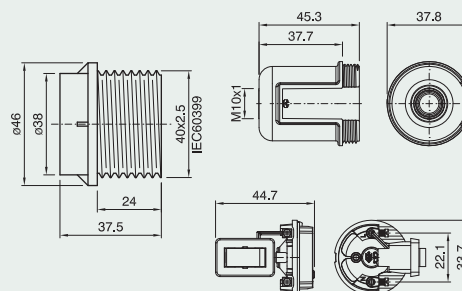
E26 lampholder disassembled into three pieces: insert with toggle switch and locking device, plain outer shell and dome with $\varnothing 10.5$ mm hole and locking device notch pass-through
code 034578 white
A800TP/IITPI/ASS/BI/SMIS250/PDE/E26



E26 lampholder disassembled into three pieces: insert with toggle switch and locking device, threaded outer shell and dome with metal nipple (M10x1) and stem locking screw
code 034579 black
A801TP/IITPI/NIP/INE/SMIS250/PDE/E26



E26 lampholder disassembled into three pieces: insert with toggle switch and locking device, partly threaded outer shell and dome with metal nipple (M10x1), stem locking screw and earth terminal
code 034580 black
A802TP/IITPI/TINE/SMIS250/PDE/E26



POSSIBLE ASSEMBLY

(Is used the insert FRUTTO E26 MONT. C/B TN I TP with screw type for rigid or flexible cables AWG 18)

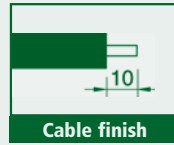
		OUTER SHELL for E26 thermoplastic lampholder with toggle switch		
		CAMICIA E26 A800 TP	CAMICIA E26 A801 TP	CAMICIA E26 A802 TP
<p>FRUTTO E26 MONT. C/B TN I TP</p>				
DOME for E26 thermoplastic lampholder with toggle switch	<p>CAPPELLO E26 I NIP TP</p>	✓	✓	✓
	<p>CAPPELLO E26 I T TP</p>	✓	✓	✓
	<p>CAPPELLO E26 I ASS TP</p>	✓	✓	✓

E26 LAMPHOLDERS



E26 three-piece phenolic thermosetting resin lampholder and accessories

Rated power: 660W
 Rated voltage: 250V
 Rated temperature: T150
 Material: phenolic thermosetting resin
 Approval: c US LISTED

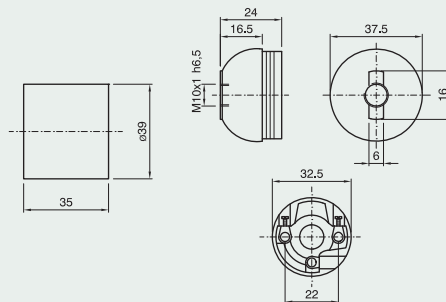


SERIE E26 art. A800 art. A801 art. A802

Beware: three-piece lampholder US LISTED approved can't be supplied in their single box, but must be compulsory supplied disassembled into master box that contain:
 250pcs of outer shell, 250pcs of insert and 250pcs of dome.

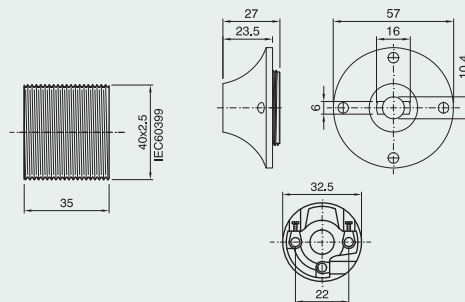
E26 lampholder disassembled into three pieces:
 insert with locking device, plain outer shell
 and dome with threaded entry (M10x1)
 with retainer
code 033648 white
code 032129 black

A800/CI/ASF/BI/SM/S250/PDE/E26



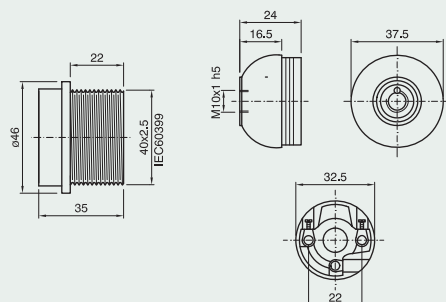
E26 lampholder disassembled into three pieces:
 insert with locking device, threaded outer shell
 and dome with flange, with $\varnothing 10.5$ mm hole
 and locking device notch pass-through
code 034412 white

A801G/CI/AS/BI/SM/S250/PDE/E26



E26 lampholder disassembled into three pieces:
 insert with locking device, partly threaded outer
 shell and dome with metal nipple (M10x1) and
 stem locking screw
code 032267 white
code 031983 black

A802/CI/NIP/NE/SM/S250/PDE/E26



POSSIBLE ASSEMBLY

(Is used the insert FRUTTO E26 STD with screw type for rigid or flexible cables AWG 18)

	FRUTTO E26 STD 	OUTER SHELL for E26 three-piece thermosetting phenolic resin lampholder		
		CAMICIA E26 A800 CI 	CAMICIA E26 A801 CI 	CAMICIA E26 A802 CI 
DOME for E26 three-piece thermosetting phenolic resin lampholder	CAPPELLO E27 NIP 	✓	✓	✓
	CAPPELLO E27 G NIP 	✓	✓	✓
	CAPPELLO E27 NIP FL 	✓	✓	✓
	CAPPELLO E27 ASF 	✓	✓	✓
	CAPPELLO E27 G ASF 	✓	✓	✓
	CAPPELLO E27 AS 	✓	✓	✓

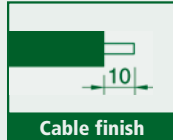
E26 LAMPHOLDERS



	FRUTTO E26 STD 	OUTER SHELL for E26 three-piece thermosetting phenolic resin lampholder		
		CAMICIA E26 A800 CI 	CAMICIA E26 A801 CI 	CAMICIA E26 A802 CI 
DOME for E26 three-piece thermosetting phenolic resin lampholder	CAPPELLO E27 G AS 	✓	✓	✓
	CAPPELLO E27 ARS 	✓	✓	✓
	CAPPELLO E27 ASS 	✓	✓	✓
	CAPPELLO E27 T 	✓	✓	✓
	CAPPELLO E27 G T 	✓	✓	✓
	CAPPELLO E27 SQ2 	✓	✓	✓
	CAPPELLO E27 SQ4 	✓	✓	✓

E26 phenolic thermosetting resin lampholder with toggle switch

Rated power: 250W
 Rated voltage: 125V
 Rated temperature: T150
 Material: phenolic thermosetting resin
 Approval: c

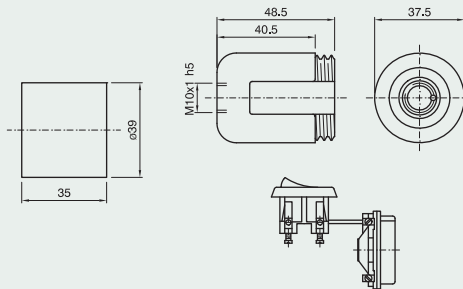


SERIE E26/I A800 I A801 I A802 I

Beware: the components below are supplied disassembled into master box that contain: 250pcs of outer shell, 250pcs of insert and 250pcs of dome.

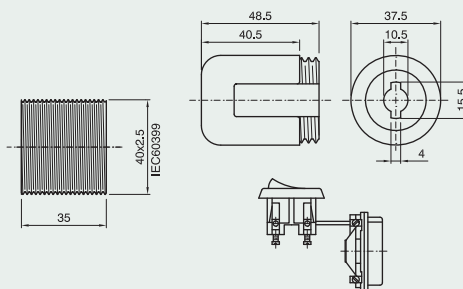
E26 lampholder disassembled into three pieces: insert with toggle switch and locking device, plain outer shell and dome with metal nipple (M10x1), stem locking screw and earth terminal
code 034581 black

A800/CII/ITINE/SMIS250/PDE/E26



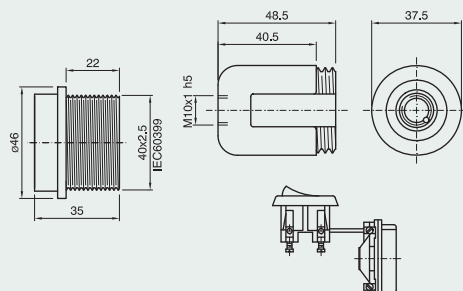
E26 lampholder disassembled into three pieces: insert with toggle switch and locking device, threaded outer shell and dome with Ø 10.5 mm hole and locking device notch pass-through
code 034582 black

A801/CII/ASSINE/SMIS250/PDE/E26



E26 lampholder disassembled into three pieces: insert with toggle switch and locking device, partly threaded outer shell and dome with metal nipple (M10x1) and stem locking screw
code 034025 white
code 032822 black

A802/CII/INIPINE/SMIS250/PDE/E26



E26 LAMPHOLDERS



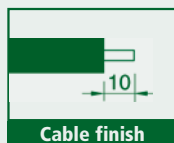
POSSIBLE ASSEMBLY

(Is used the insert FRUTTO E26 M./I with screw type for rigid or flexible cables AWG 18)

<i>FRUTTO E26 M./I</i>		OUTER SHELL for E26 thermosetting resin lampholder with toggle switch		
		<i>CAMICIA E26 A800 CI</i>	<i>CAMICIA E26 A801 CI</i>	<i>CAMICIA E26 A802 CI</i>
DOME for E26 thermosetting resin lampholder with toggle switch	<i>CAPPELLO E27 I NIP</i> 	✓	✓	✓
	<i>CAPPELLO E27 I T</i> 	✓	✓	✓
	<i>CAPPELLO E27 I ASS</i> 	✓	✓	✓

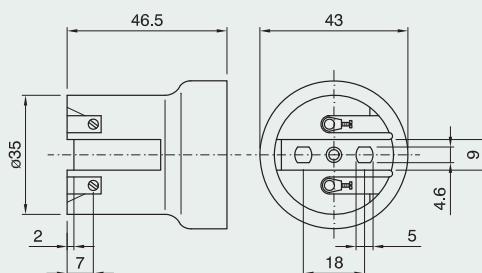
E26 porcelain lampholder and snap-on domes

Rated power: 660W
 Rated voltage: 250V
 Rated Temperature: T150
 Material: porcelain
 Other brackets on request
 Approval: US



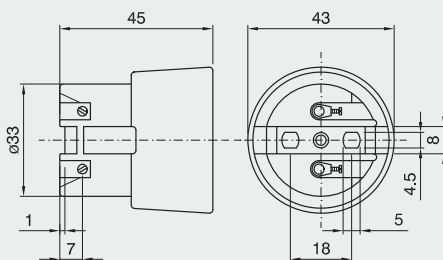
E26 lampholder

Terminals: screw type for rigid or flexible cables AWG 18
Connection: through holes for M4 screws
Screwed shell: zinc-plated steel
Packaging: 200 pieces
code 027192
90/MIPDE/E26



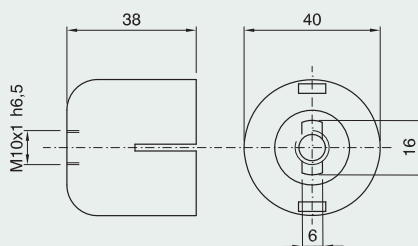
E26 lampholder

Terminals: screw type for rigid or flexible cables AWG 18
Connection: through holes for M4 screws or with snap-on domes
Screwed shell: zinc-plated steel
Packaging: 200 pieces
code 027191
93/MIPDE/E26



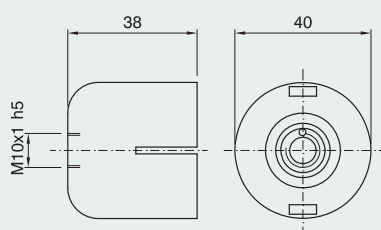
Dome for porcelain lampholder

Material: thermoplastic
Connection: threaded entry (M10x1) with retainer
Locking device notch: external
Packaging: 500 pieces
code 008013
CAPPELLO E27 ASF BIANCO PER PORCELLANA




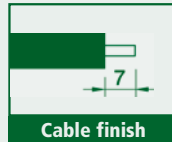
Dome for porcelain lampholder

Material: thermoplastic
Connection: with metal nipple (M10x1) and stem locking screw
Packaging: 500 pieces
code 007545
CAPPELLO E27 NIP BIANCO PER PORCELLANA



E40 porcelain lampholder

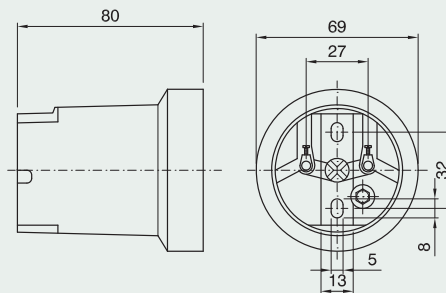
Rated current: 16A
 Rated voltage: 750V
 Rated temperature: T300
 Overvoltage category: III
 Rated pulse voltage: 5KV
 Material: porcelain
 Approval: 



E40 lampholder with lamp retention device

Terminals: screw type for rigid or flexible cables 1.5 ÷ 4 mm²
Screwed shell: nickel-plated copper
Packaging: 48 pieces
code 400123

4PDE/IME40/110/N1CS/F



E40 lampholder

Terminals: screw type for rigid or flexible cables 1.5 ÷ 4 mm²
Connection: metal bracket with slots for M5 screws
Screwed shell: nickel-plated copper
Packaging: 48 pieces
code 400022 with lamp retention device
4PDE/IME40/110/N1CS/F/SQE91

